

Property & Public Services
Property Records Division
Yellow Medicine County, Minnesota
I hereby certify that the within instrument
was filed on February 26, 2015 at 10:20 AM

Janel Timm, Yellow Medicine County Recorder

By Kelly Kueger Deputy

CERTIFICATE OF LOCATION OF GOVERNMENT CORNER

East Quarter Corner of Section 35, Township 115, Range 39

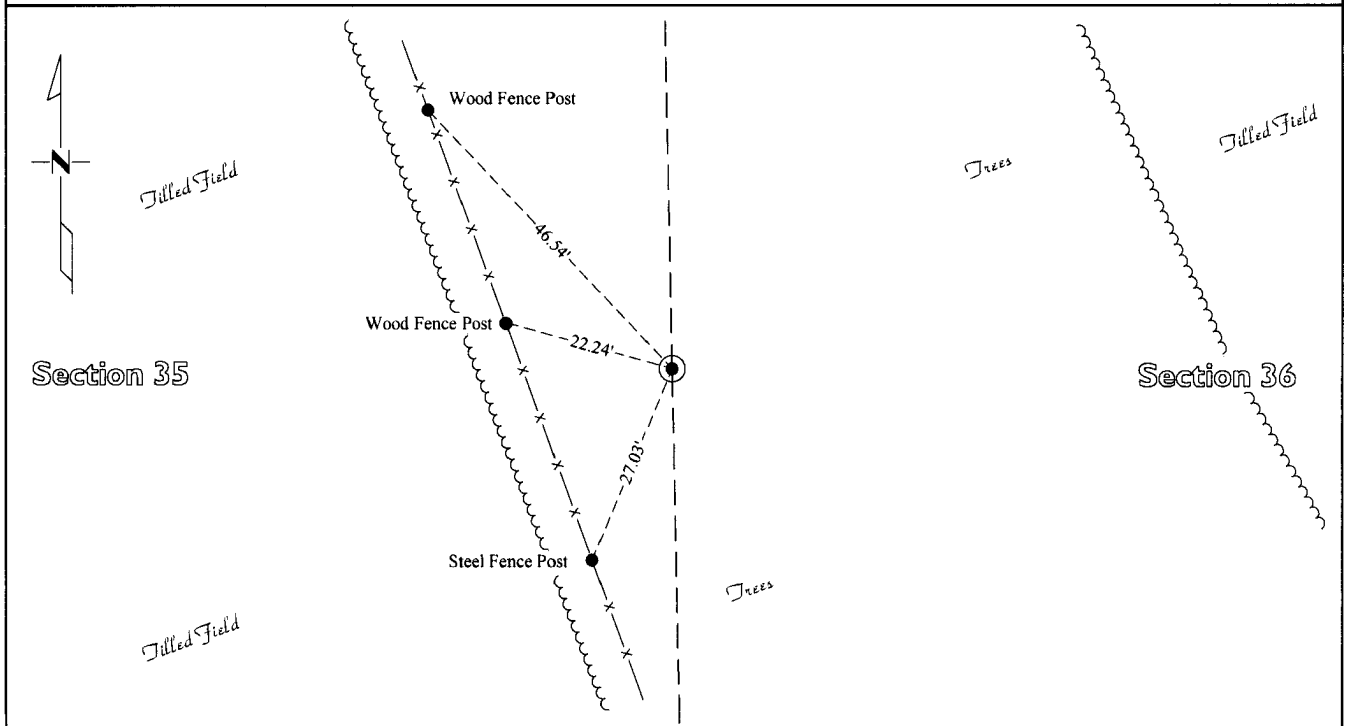
Fifth Principal Meridian, State of Minnesota, County of Yellow Medicine

At the corner location shown on the sketch:

On Jan. 28, 2015 found a Nothing
DATE

left monument as found lowered monument removed monument (explain)

On Jan. 30, 2015 placed a Iron Rod with a "46169 46171" stamped plastic cap
DATE



Statement of evidence for this corner location is on back of this page.

I hereby certify that this survey, plan, or report was prepared by me or under my direct supervision and that I am a duly Licensed Land Surveyor under the laws of the state of Minnesota.

Signature [Signature]
Date 2/24/15

Typed or Printed Name: Joshua M. Stern
Reg. No. 46169

STATEMENT OF EVIDENCE

East Quarter Corner Section 35, T115N-R39W

- 1864 Chas E. Davis & J. W. Webb were contracted by the United States Government Land Office to perform the Original Public Land Survey in this township. Davis & Webb records in their field notes that they "Set post in mound with pits for quarter section corner"
- Jan. 30, 2015 Joshua M. Stern, LS 46169, searched with a metal locator at this corner position and found no evidence of section corner monumentation. Stern positioned this corner midway and online between the Northeast and Southeast corners of this section in accordance with the Original Government Land Office Survey dimensions. An Iron Rod with a "46169 46171" stamped plastic cap was set at this corner position.