

Property & Public Services
Property Records Division
Yellow Medicine County, Minnesota
I hereby certify that the within instrument
was filed on February 26, 2015 at 10:25 AM

Janel Timm, Yellow Medicine County Recorder

By Kelly Kuger Deputy

CERTIFICATE OF LOCATION OF GOVERNMENT CORNER

Northeast Corner of Section 35, Township 115, Range 39

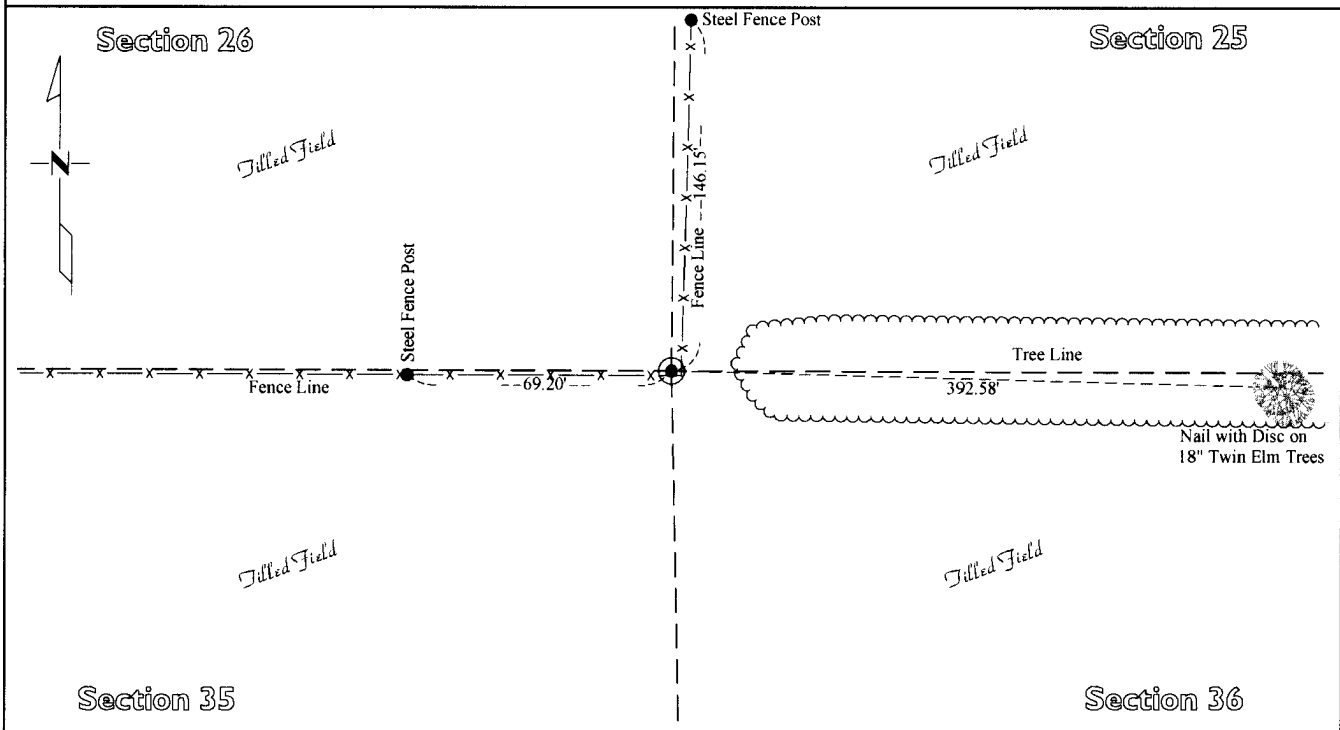
Fifth Principal Meridian, State of Minnesota, County of Yellow Medicine

At the corner location shown on the sketch:

On Jan. 28, 2015 found a Nothing
DATE

left monument as found lowered monument removed monument (explain)

On Jan. 30, 2015 placed a Iron Rod with a "46169 46171" stamped plastic cap
DATE



Statement of evidence for this corner location is on back of this page.

I hereby certify that this survey, plan, or report was prepared by me or under my direct supervision and that I am a duly Licensed Land Surveyor under the laws of the state of Minnesota.

Signature [Signature]
Date 2/18/15

Typed or Printed Name: Joshua M. Stern
Reg. No. 46169

STATEMENT OF EVIDENCE

Northeast Corner Section 35, T115N-R39W

- 1864 Chas E. Davis & J. W. Webb was contracted by the United States Government Land Office to perform the Original Public Land Survey in this township. Davis & Webb records in their field notes that they "Set post in mound with pits for Corner of Sec's 25, 26, 35 & 36"
- 1896 John Nygaard, County Surveyor, records in County Surveyor's Record Book, page 373 does not mention what type of monument was found but he does dimension to this corner position.
- 1914 John Nygaard, County Surveyor, records in County Surveyor's Record Book, page 335 does not mention what type of monument was found but he does dimension to this corner position. Nygaard records a dimension of 2628 from the East Quarter of Section 26 to the Southeast corner of Section 26, but field measurements taken by Bonnema Surveys and his statement on the North Quarter of Section 35 show this measurement should actually be 2658.
- Jan. 30, 2015 Joshua M. Stern, LS 46169, searched with a metal locator at this corner position and found no evidence of a section corner monumentation. Stern positioned this corner using 5212 feet east of the Northwest corner of Section 35 (per Nygaard), 2658 feet south of East Quarter of Section 26 (per Nygaard), and 1344 feet west of a fence line near the Southeast corner of the Southwest Quarter of the Southwest Quarter of Section 25 (per Nygaard). This position fits the fence lines well near this corner and fits other use lines in Section 25,26,35, and 36. An Iron Rod with a "46169 46171" stamped plastic cap was set at this corner position.