

Doc# 261836 Fee: \$0.00 2 Pages

Property & Public Services  
Property Records Division  
Yellow Medicine County, Minnesota  
I hereby certify that the within instrument  
was filed on April 16, 2015 at 10:10 AM

Janel Timm, Yellow Medicine County Recorder

By Kelly Kuger Deputy

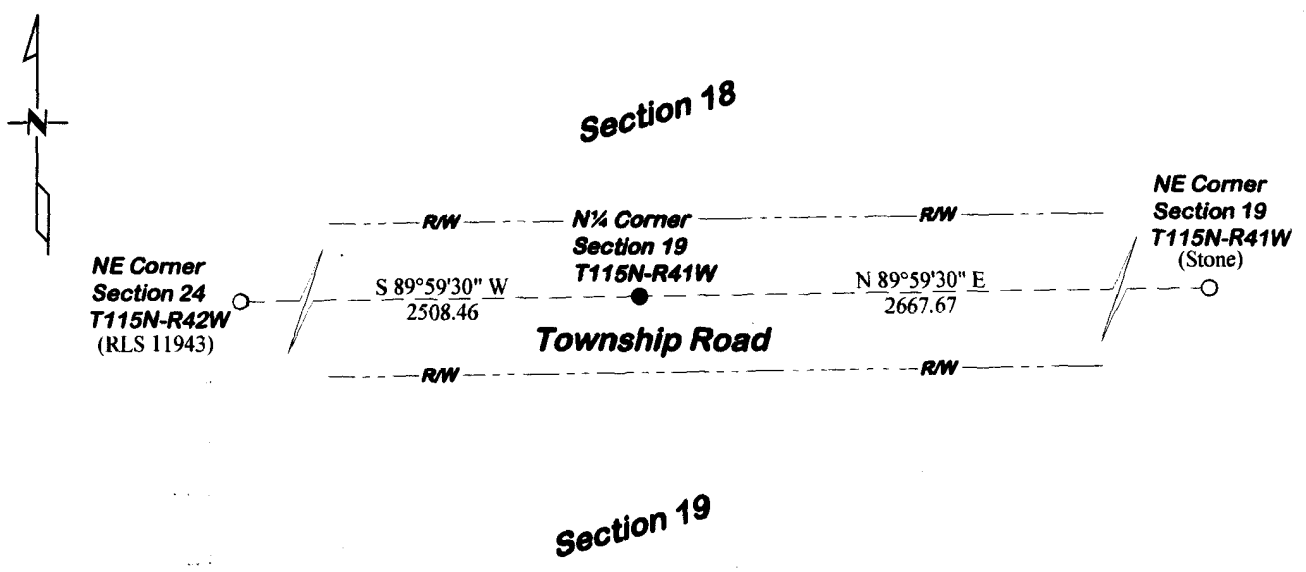
### CERTIFICATE OF LOCATION OF GOVERNMENT CORNER

North Quarter Corner of Section 19, Township 115, Range 41

Fifth Principal Meridian, State of Minnesota, County of Yellow Medicine

At the corner location shown on the sketch:

- On 4/30/12 found a Nothing  
DATE
- left monument as found       lowered monument       removed monument (explain)
- On 5/16/12 placed a Capped Iron Rod "46169 46171"  
DATE



Statement of evidence for this corner location is on back of this page.

I hereby certify that this document was researched and prepared by me or under my direct supervision.

Signature Nathan Clarke Date 7/30/12 License No. 46171  
 Title:  Land Surveyor       Professional Engineer       County Surveyor       County Engineer

## STATEMENT OF EVIDENCE

### ***North Quarter Corner of Section 19 T115N-R41W***

Sept. 1864

Chas E. Davis and J.W. Webb Jr. were contracted by the United States Government Land Office to perform the Original Public Land Survey in this township. They record in their field notes "set post in mound with pits for quarter section corner".

1901

John Norgaard, County Surveyor, records in Yellow Medicine County Surveyor's Record Book A page 76, "Located last year on line and at equal proportionate distances from Sec. Cor.", but does not note what type of monument was found at the corner position

May 16, 2012

Matthew D. Runke, P.L.S. #46171, set a Capped Iron Rod "46169 46171" at the corner position using single proration methods from dimensions shown on 1901 Norgaard survey. This position is supported by field evidence of tillage lines to the south of the corner position. No large excavation was done for this corner because it falls within the road Right of Way.