

Property & Public Services
Property Records Division
Yellow Medicine County, Minnesota
I hereby certify that the within instrument
was filed on October 1, 2015 at 9:45 AM

Janel Timm, Yellow Medicine County Recorder

By Kelly Kuger Deputy

CERTIFICATE OF LOCATION OF GOVERNMENT CORNER

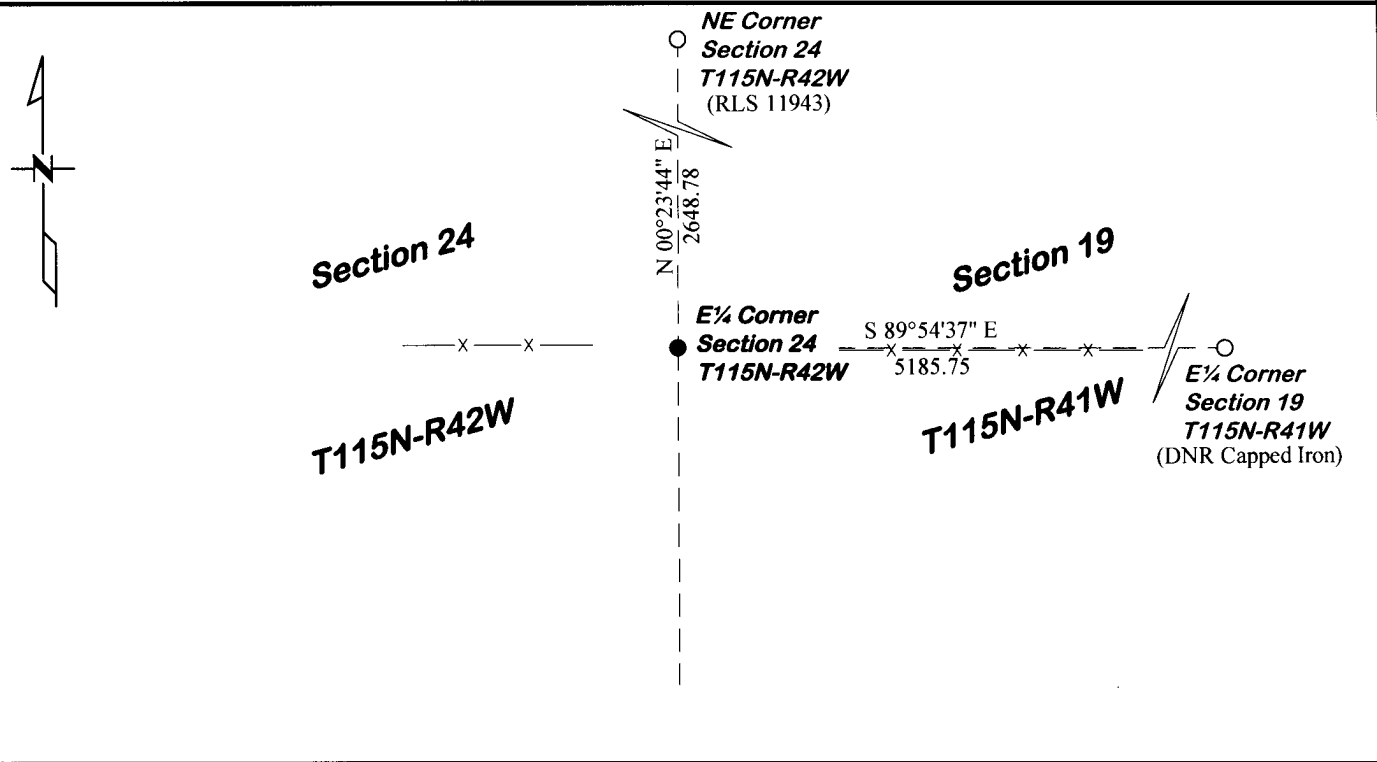
East Quarter Corner of Section 24, Township 115, Range 42
Fifth Principal Meridian, State of Minnesota, County of Yellow Medicine

At the corner location shown on the sketch:

On 4/30/12 found a Nothing
DATE

left monument as found lowered monument removed monument (explain)

On 5/16/12 placed a Capped Iron Rod "46169 46171"
DATE



Statement of evidence for this corner location is on back of this page.

I hereby certify that this document was researched and prepared by me or under my direct supervision.

Signature [Signature] Date 7/30/12 License No. 46171
 Title: Land Surveyor Professional Engineer County Surveyor County Engineer

STATEMENT OF EVIDENCE

East Quarter Corner of Section 24 T115N-R42W

1858

W.J. Neely was contracted by the United States Government Land Office to perform the Original Public Land Survey in this township. He records in his field notes "Set gov sec post deposited coal made mound trench & pits as per instructions".

1901

John Norgaard, County Surveyor, records in Yellow Medicine County Surveyor's Record Book A page 76, "found Section cor.", but does not note what type of monument was found at the corner position.

May 16, 2012

Matthew D. Runke, P.L.S. #46171, set a Capped Iron Rod "46169 46171" at the corner position using single proration methods from dimensions shown on 1901 Norgaard survey. This position is supported by field evidence of old fence posts to the north, east, and west of the corner position.