

# CERTIFICATE OF LOCATION OF GOVERNMENT CORNER

NORTHEAST Corner of Section 8, Township 113, Range 39, 5TH P.M.

STATE OF MINNESOTA, County of YELLOW MEDICINE

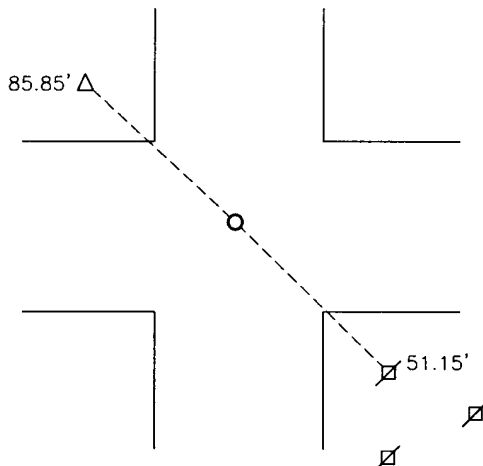
At the corner location shown on the sketch:

On 4/8/15 found a 12" bridge spike  
DATE

left monument as found,  lowered monument,  removed monument (explain)

On 4/8/15 placed a 5/8" iron with seal #43844  
DATE

SKETCH OF REFERENCE TIES



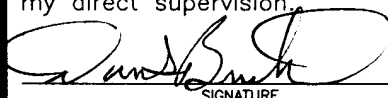
Minnesota State Plane Coordinate  
System Yellow Medicine County Datum  
NAD83 (1996)

N: 127043.017  
E: 587436.130

Nail and survey marker in utility pole SE 51.15'  
Nail and survey marker in pedestal post NW 85.85'

Statement of evidence relative to this corner location is on back of page.

I hereby certify that this document and the data contained herein was prepared by me or under my direct supervision.

  
SIGNATURE

3/2/16  
DATE

Registration No. 43844

- Land Surveyor,  Professional Engineer  
 County Surveyor,  County Engineer

OFFICE OF THE COUNTY RECORDER  
County of \_\_\_\_\_

I hereby certify that this document was filed in the Co. Recorders office at \_\_\_\_\_ .M on the \_\_\_\_\_ day of \_\_\_\_\_ A.D. 20 \_\_\_\_\_

County Recorder \_\_\_\_\_

By \_\_\_\_\_, Deputy

DOCUMENT NO. \_\_\_\_\_

## Statement of Evidence

In September, Chas E. Davis and J.W. Webb Jr. did the original subdivision of the township.

On August 22, 1955, W. Bix Griebler, found a wooden fence post 5'± below the surface at the corner. He stated that his distances agreed with a survey that John Norgaard did in 1903.

On April 8, 2015, Bueltel-Moseng Land Surveying found 12 inch bridge spike at the corner. We removed the bridge spike and set a 5/8" iron with seal #43844 in place of bridge spike.

**Doc# 263806 Fee: \$0.00 2 Pages**

Property & Public Services

Property Records Division

Yellow Medicine County, Minnesota

I hereby certify that the within instrument  
was filed on March 28, 2016 at 10:55 AM

Janel Timm, Yellow Medicine County Recorder

By Debra Blood Deputy