

CERTIFICATE OF LOCATION OF GOVERNMENT CORNER

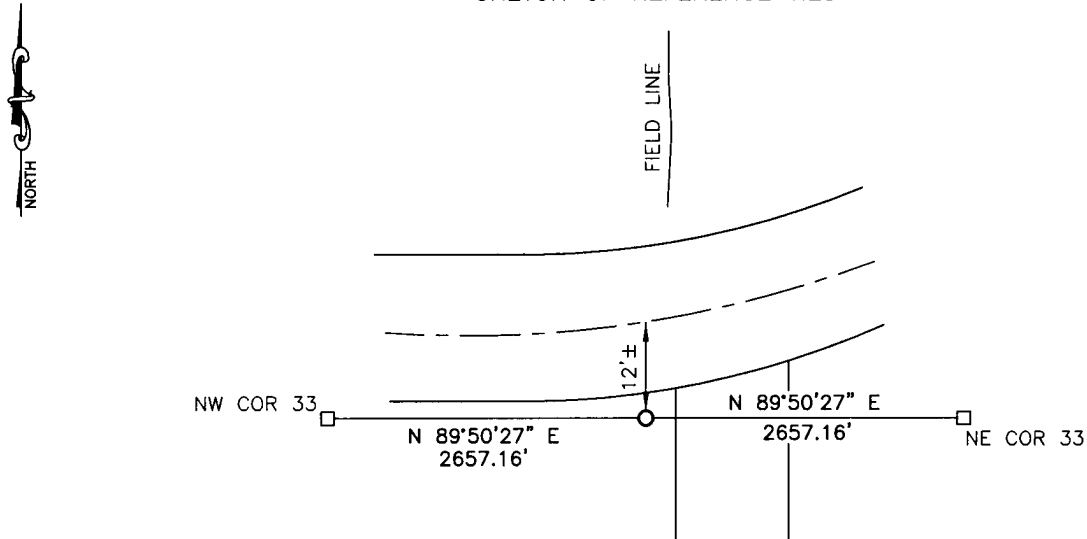
NORTH QUARTER Corner of Section 33, Township 113, Range 39, 5TH P.M.

STATE OF MINNESOTA, County of YELLOW MEDICINE

At the corner location shown on the sketch:

- On _____ found a _____
DATE
- left monument as found, lowered monument, removed monument (explain)
- On 10/27/15 placed a 5/8" iron with seal #43844
DATE

SKETCH OF REFERENCE TIES



Minnesota State Plane Coordinate
System Yellow Medicine County Datum
NAD83 (1996)

NO TIES

N: 105584.517
E: 590149.354

Statement of evidence relative to this corner location is on back of page.

I hereby certify that this document and the data contained herein was prepared by me or under my direct supervision.

[Signature] 3/2/16
SIGNATURE DATE

Registration No. 43844

- Land Surveyor, Professional Engineer
- County Surveyor, County Engineer

OFFICE OF THE COUNTY RECORDER

County of _____

I hereby certify that this document was filed in the Co. Recorders office at _____ .M on the _____ day of _____ A.D. 20 _____

County Recorder _____

By _____, Deputy

DOCUMENT NO. _____

Statement of Evidence

In September, 1864, Chas. E. Davis and J.W. Webb Jr. did the original subdivision of the township.

In June, 1912, John Norgaard, County Surveyor, recorded a post in an old pit at the corner.

On October 27, 2015, Bueltel-Moseng Land Surveying set a 5/8" iron with seal #43844 midway and on line between section corners. It is in the ditch on the south side of road and west side of the field approach. We retraced Norgaard's 1912 survey in Section 28-113-39 and we are $0.05' \pm$ of his measurements to said corner.

Doc# 263810 Fee: \$0.00 2 Pages

Property & Public Services

Property Records Division

Yellow Medicine County, Minnesota

I hereby certify that the within instrument
was filed on March 28, 2016 at 11:15 AM

Janel Timm, Yellow Medicine County Recorder

By Debra Blood Deputy