

CERTIFICATE OF LOCATION OF GOVERNMENT CORNER

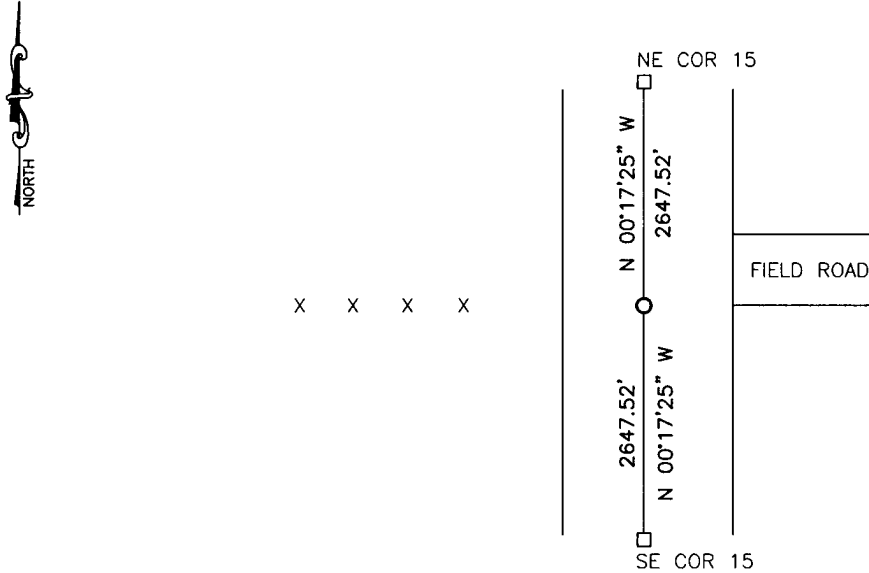
EAST QUARTER Corner of Section 15, Township 114, Range 38, 5TH P.M.

STATE OF MINNESOTA, County of YELLOW MEDICINE

At the corner location shown on the sketch:

- On _____ found a _____
DATE
- left monument as found, lowered monument, removed monument (explain)
- On 4/29/15 placed a 5/8" iron with seal #43844
DATE

SKETCH OF REFERENCE TIES



Minnesota State Plane Coordinate
 System Yellow Medicine County Datum
 NAD83 (1996)

NO TIES

N: 150774.347
 E: 629734.410

Statement of evidence relative to this corner location is on back of page.

I hereby certify that this document and the data contained herein was prepared by me or under my direct supervision

David Bush 3/2/16
SIGNATURE DATE

Registration No. 43844

- Land Surveyor, Professional Engineer
 County Surveyor, County Engineer

OFFICE OF THE COUNTY RECORDER

County of _____

I hereby certify that this document was filed in the Co. Recorders office at _____ .M on the _____ day of _____ A.D. 20 _____

County Recorder _____

By _____, Deputy

DOCUMENT NO. _____

Statement of Evidence

In October, 1864, Chas E. Davis and J.W. Webb Jr. did the original subdivision of the township.

On April 29, 2015, Bueltel-Moseng Land Surveying set a survey spike with seal #43844 midway and online. It is in line with the fence line to the west and field road to the east.

Doc# 263811 Fee: \$0.00 2 Pages

Property & Public Services

Property Records Division

Yellow Medicine County, Minnesota

**I hereby certify that the within instrument
was filed on March 28, 2016 at 11:20 AM**

Janel Timm, Yellow Medicine County Recorder

By Debra Blood Deputy