

# CERTIFICATE OF LOCATION OF GOVERNMENT CORNER

EAST QUARTER Corner of Section 33, Township 114, Range 38, 5TH P.M.

STATE OF MINNESOTA, County of YELLOW MEDICINE

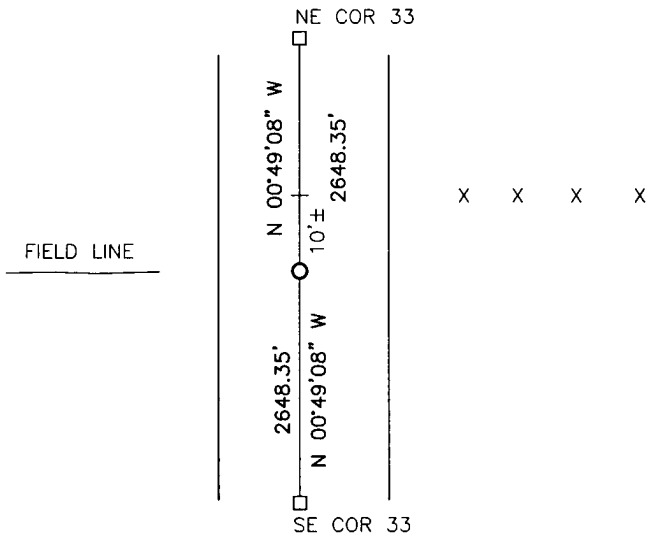
At the corner location shown on the sketch:

On \_\_\_\_\_ found a \_\_\_\_\_  
DATE

left monument as found,  lowered monument,  removed monument (explain)

On 4/29/15 placed a survey spike with seal #43844  
DATE

### SKETCH OF REFERENCE TIES



Minnesota State Plane Coordinate  
System Yellow Medicine County Datum  
NAD83 (1996)

NO TIES

N: 134791.373  
E: 624520.174

Statement of evidence relative to this corner location is on back of page.

I hereby certify that this document and the data contained herein was prepared by me or under my direct supervision.

[Signature] 3/2/16  
SIGNATURE DATE

Registration No. 43844

- Land Surveyor,  Professional Engineer
- County Surveyor,  County Engineer

OFFICE OF THE COUNTY RECORDER

County of \_\_\_\_\_

I hereby certify that this document was filed in the Co. Recorders office at \_\_\_\_\_ .M on the \_\_\_\_\_ day of \_\_\_\_\_ A.D. 20 \_\_\_\_\_

County Recorder \_\_\_\_\_

By \_\_\_\_\_, Deputy

DOCUMENT NO. \_\_\_\_\_

## Statement of Evidence

In October, 1864, Chas E. Davis and J.W. Webb Jr. did the original subdivision of the township.

On May 7, 1891, Jonah Peterman found a government mound at the corner.

On April 29, 2015, Bueltel-Moseng Land Surveying set a survey spike with seal #43844 midway and online between the section corners. It is in line with the field line to the west and 10'± south of fence to the east.

**Doc# 263813 Fee: \$0.00 2 Pages**

Property & Public Services

Property Records Division

Yellow Medicine County, Minnesota

I hereby certify that the within instrument  
was filed on March 28, 2016 at 11:30 AM

Janel Timm, Yellow Medicine County Recorder

By Debra Blood Deputy