

# CERTIFICATE OF LOCATION OF GOVERNMENT CORNER

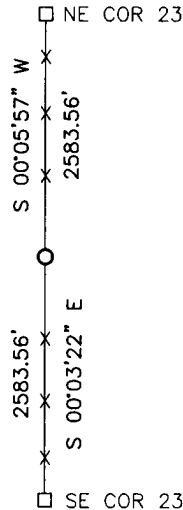
EAST QUARTER Corner of Section 23, Township 114, Range 39, 5TH P.M.

STATE OF MINNESOTA, County of YELLOW MEDICINE

At the corner location shown on the sketch:

- On \_\_\_\_\_ found a \_\_\_\_\_  
DATE
- left monument as found,  lowered monument,  removed monument (explain)
- On 4/2/15 placed a 5/8" iron with seal #43844  
DATE

### SKETCH OF REFERENCE TIES



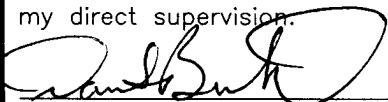
Minnesota State Plane Coordinate  
 System Yellow Medicine County Datum  
 NAD83 (1996)

NO TIES

N: 145343.543  
 E: 603374.050

Statement of evidence relative to this corner location is on back of page.

I hereby certify that this document and the data contained herein was prepared by me or under my direct supervision.

  
SIGNATURE 3/2/16  
DATE

Registration No. 43844

- Land Surveyor,  Professional Engineer  
 County Surveyor,  County Engineer

OFFICE OF THE COUNTY RECORDER

County of \_\_\_\_\_

I hereby certify that this document was filed in the Co. Recorders office at \_\_\_\_\_ .M on the \_\_\_\_\_ day of \_\_\_\_\_ A.D. 20 \_\_\_\_\_

County Recorder \_\_\_\_\_

By \_\_\_\_\_, Deputy

DOCUMENT NO. \_\_\_\_\_

## Statement of Evidence

In September, 1864, Chas E. Davis and J.W. Webb Jr. did the original subdivision of the township.

In 1932, John Norgaard, County Surveyor, recorded distances to the corner, while doing a survey in Section 23-114-39.

On April 2, 2015, Bueltel-Moseng Land Surveying searched the area midway and online between section corners, found nothing. We set 5/8" iron with seal #43844 at equal distances between section corners and in the fence line.

**Doc# 263814 Fee: \$0.00 2 Pages**

Property & Public Services  
Property Records Division  
Yellow Medicine County, Minnesota  
I hereby certify that the within instrument  
was filed on March 28, 2016 at 11:35 AM

Janel Timm, Yellow Medicine County Recorder

By Debra Beard Deputy