

CERTIFICATE OF LOCATION OF GOVERNMENT CORNER

NORTH QUARTER Corner of Section 20, Township 115, Range 41, 5TH P.M.

STATE OF MINNESOTA, County of YELLOW MEDICINE

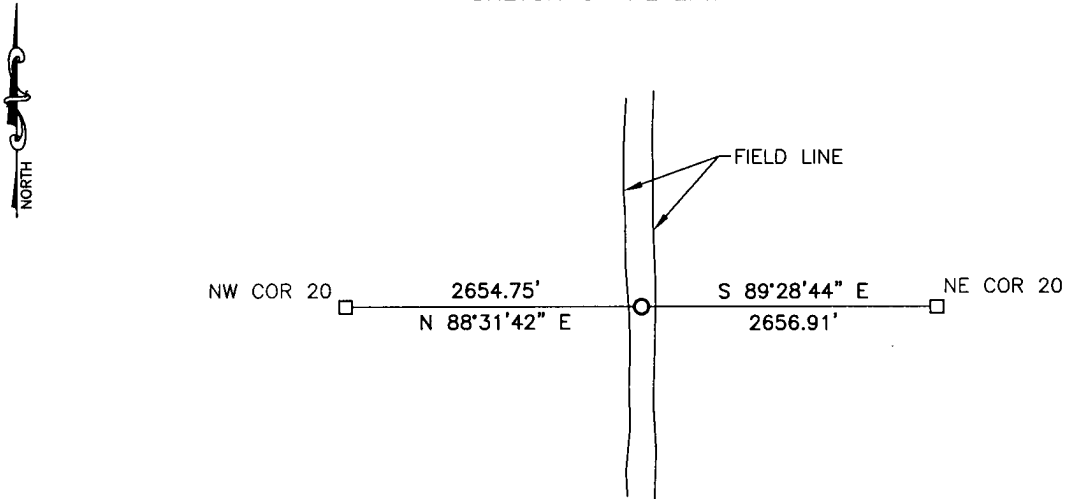
At the corner location shown on the sketch:

On _____ found a _____
DATE

left monument as found, lowered monument, removed monument (explain)

On 10/6/15 placed a 5/8" iron with seal #43844
DATE

SKETCH OF REFERENCE TIES



Minnesota State Plane Coordinate
System Yellow Medicine County Datum
NAD83 (1996)

NO TIES

N: 180260.009
E: 521129.718

Statement of evidence relative to this corner location is on back of page.

I hereby certify that this document and the data contained herein was prepared by me or under my direct supervision.

[Signature] 3/2/16
SIGNATURE DATE

Registration No. 43844

- Land Surveyor, Professional Engineer
- County Surveyor, County Engineer

OFFICE OF THE COUNTY RECORDER

County of _____

I hereby certify that this document was filed in the Co. Recorders office at _____ .M on the _____ day of _____ A.D. 20 _____

County Recorder _____

By _____, Deputy

DOCUMENT NO. _____

Statement of Evidence

In September, 1864, Chas. E. Davis and J.W. Webb Jr. did the original subdivision of the township.

In 1984, John D. Walker, County Surveyor, found a corner fence post at the corner. He set a DNR monument on the east side of the fence post and 6'± west of field line.

(No Date), Marihart Surveying found a monument at the corner.

On October 6, 2015, Bueltel-Moseng Land Surveying set a 5/8" iron with seal #43844 by using the information from the Minnesota DNR.

Doc# 263821 Fee: \$0.00 2 Pages

Property & Public Services
Property Records Division
Yellow Medicine County, Minnesota
I hereby certify that the within instrument
was filed on March 28, 2016 at 12:10 PM

Janel Timm, Yellow Medicine County Recorder

By Debra Blood Deputy