

Statement of evidence relative to this corner location is on back of page.

I hereby certify that this document and the data contained herein was prepared by me or under my direct supervision.

Jesse D. Zeig 9/26/16  
Jesse D. Zeig DATE

Registration No. 44996

Land surveyor  County Surveyor

Doc# 264894 Fee: \$0.00 2 Pages

Property & Public Services  
Property Records Division  
Yellow Medicine County, Minnesota  
I hereby certify that the within instrument was filed on September 28, 2016 at 9:40 AM

Janel Timm, Yellow Medicine County Recorder

By Kelly Kueger Deputy

### CERTIFICATE OF LOCATION OF GOVERNMENT CORNER

NORTHEAST Corner of Section 20, Township 114 N, Range 38 W, 5th P.M.

STATE OF MINNESOTA, County of YELLOW MEDICINE

At the corner location shown on the sketch:

On 9/15/16 found a 1/2" IRON PIPE  
DATE

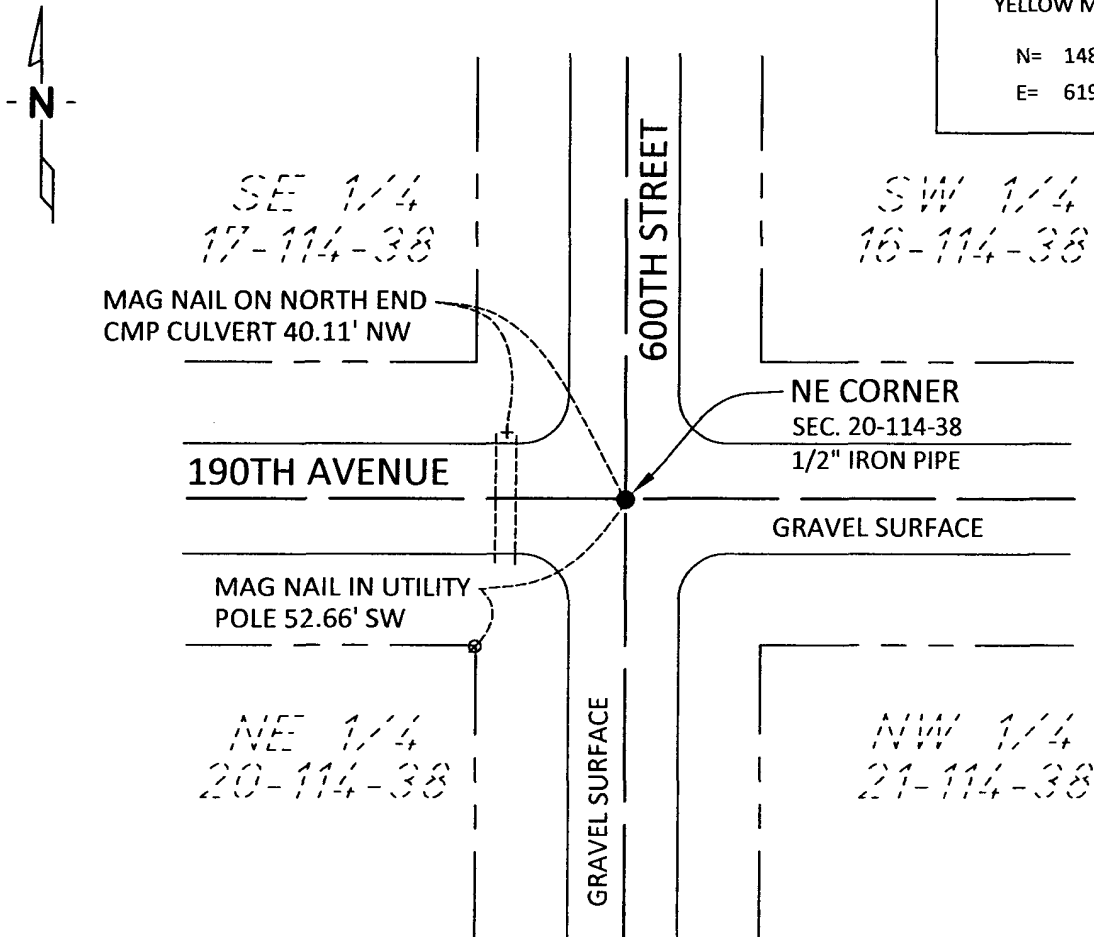
left monument as found,  lowered monument,  removed monument (explain)

On \_\_\_\_\_ placed a \_\_\_\_\_  
DATE

#### SKETCH OF REFERENCE TIES

NAD83 ( 2007 ADJUSTMENT)  
YELLOW MEDICINE COUNTY

N= 148061.53  
E= 619111.54



Statement of Evidence:

**Northeast Corner Section 20, Township 114 N, Range 38 W**

- 1858      The original Public Land Survey subdividing the township was completed by Brent V. Barnes, U.S. Deputy Surveyor in 1858.
- 2016      On September 15, a Bolton & Menk Inc, Sleepy Eye, survey crew found found a 1/2" iron pipe at the surface of the gravel Township Road. This location seems reasonable and is accepted as the corner.