

Statement of evidence relative to this corner location is on back of page.

I hereby certify that this document and the data contained herein was prepared by me or under my direct supervision.

Jesse D. Zeig  
Jesse D. Zeig

9/26/16  
DATE

Registration No. 44996

Land surveyor  County Surveyor

Doc# 264895 Fee: \$0.00 2 Pages

Property & Public Services  
Property Records Division  
Yellow Medicine County, Minnesota  
I hereby certify that the within instrument was filed on September 28, 2016 at 9:45 AM

Janel Timm, Yellow Medicine County Recorder

By Kelly Kueger Deputy

# CERTIFICATE OF LOCATION OF GOVERNMENT CORNER

EAST QUARTER Corner of Section 20, Township 114 N, Range 38 W, 5th P.M.

STATE OF MINNESOTA, County of YELLOW MEDICINE

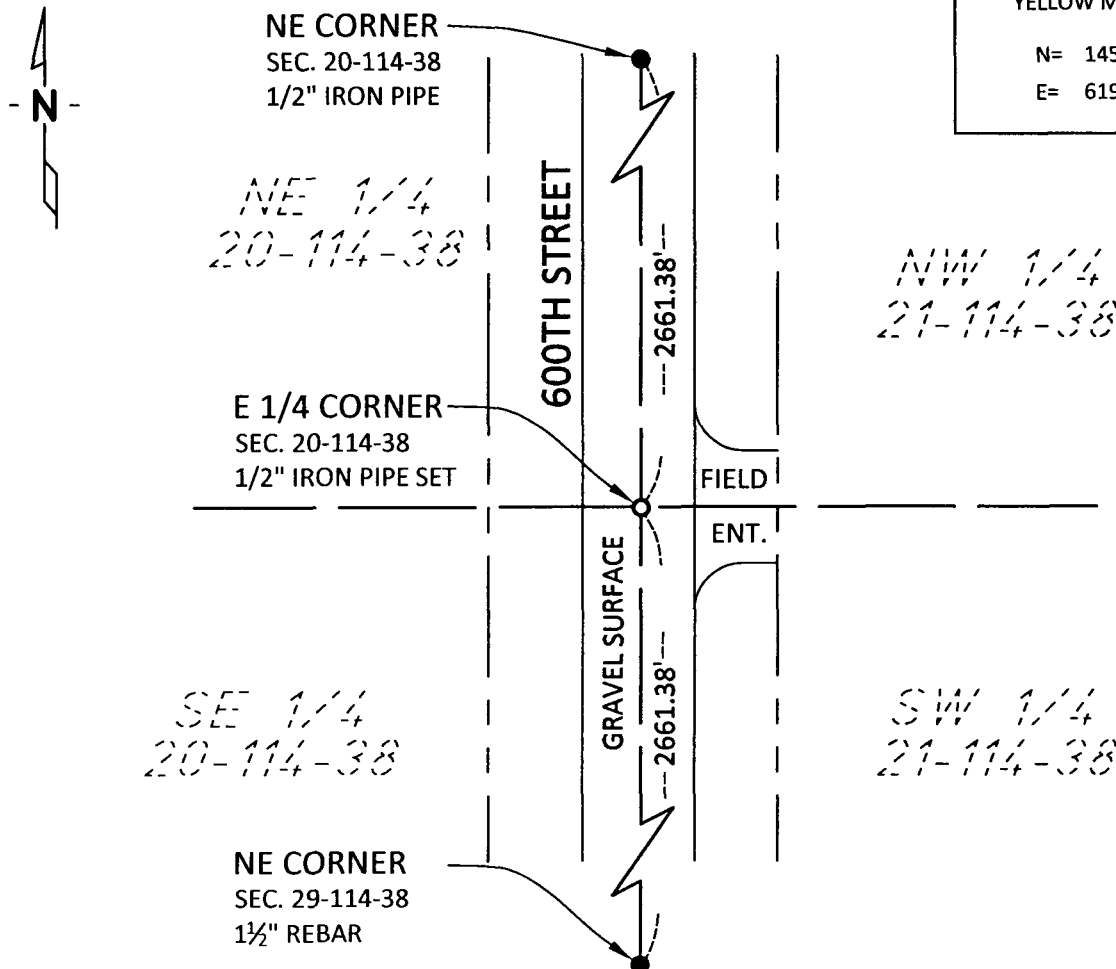
At the corner location shown on the sketch:

On 9/15/16 found a NOTHING  
DATE

left monument as found,  lowered monument,  removed monument (explain)

On 9/15/16 placed a 1/2" IRON PIPE MONUMENT  
DATE

SKETCH OF REFERENCE TIES



NAD83 ( 2007 ADJUSTMENT)	
YELLOW MEDICINE COUNTY	
N=	145400.28
E=	619138.36

Statement of Evidence:

East Quarter Corner Section 20, Township 114 N, Range 38 W

- 1858      The original Public Land Survey subdividing the township was completed by Brent V. Barnes, U.S. Deputy Surveyor in 1858.
- 2016      On September 15, a Bolton & Menk Inc, Sleepy Eye, survey crew set a 1/2" iron pipe monument midway and online between the Northeast Corner of Section 20-114-38 and the Northeast Corner of Section 29-114-38. The iron pipe was set 3" below the surface of the gravel Township Road. This location seems reasonable and is accepted as the corner.