

Statement of evidence relative to this corner location is on back of page.

I hereby certify that this document and the data contained herein was prepared by me or under my direct supervision.

Jesse D Zeig
Jesse D Zeig

9/26/16
DATE

Registration No. 44996

Land surveyor County Surveyor

Doc# 264896 Fee: \$0.00 2 Pages

Property & Public Services
Property Records Division
Yellow Medicine County, Minnesota
I hereby certify that the within instrument was filed on September 28, 2016 at 9:50 AM

Janel Timm, Yellow Medicine County Recorder

By Kelly Kanger Deputy

CERTIFICATE OF LOCATION OF GOVERNMENT CORNER

NORTHEAST Corner of Section 29, Township 114 N, Range 38 W, 5th P.M.

STATE OF MINNESOTA, County of YELLOW MEDICINE

At the corner location shown on the sketch:

On 9/15/16 found a 1 1/2" REBAR
DATE

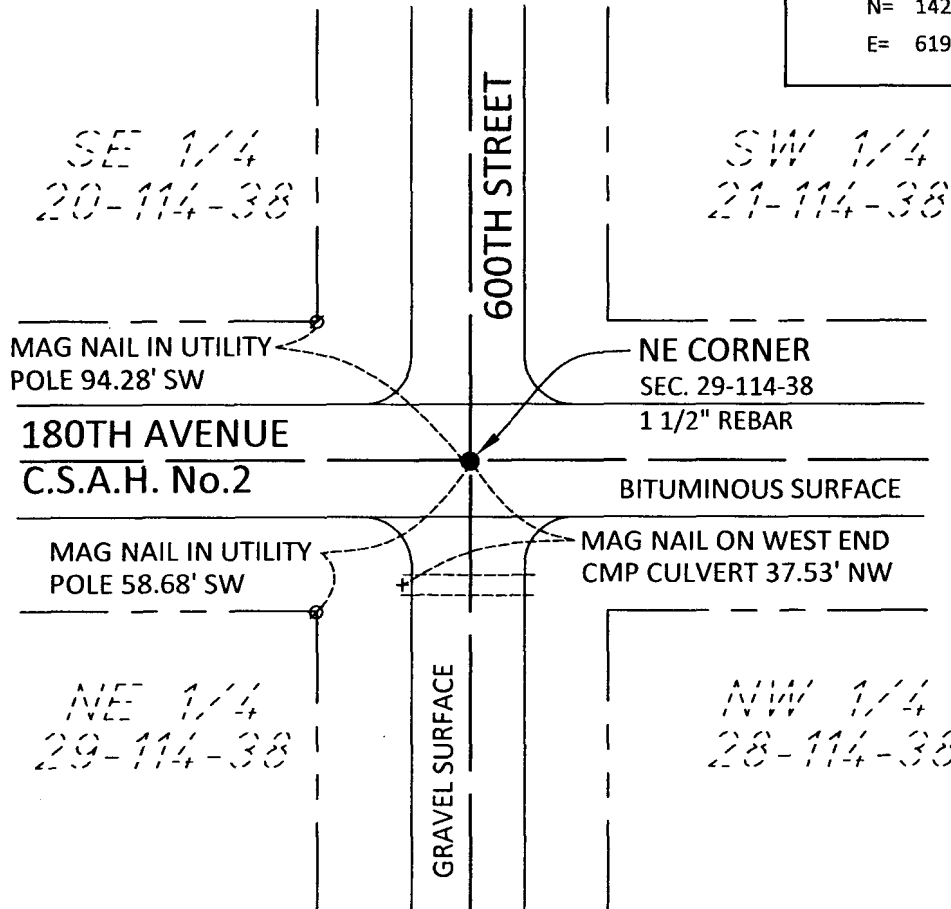
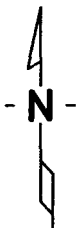
left monument as found, lowered monument, removed monument (explain)

On _____ placed a _____
DATE

SKETCH OF REFERENCE TIES

NAD83 (2007 ADJUSTMENT)
YELLOW MEDICINE COUNTY

N= 142739.04
E= 619165.18



Statement of Evidence:

Northeast Corner Section 29, Township 114 N, Range 38 W

- 1858 The original Public Land Survey subdividing the township was completed by Brent V. Barnes, U.S. Deputy Surveyor in 1858.
- 2016 On September 15, a Bolton & Menk Inc, Sleepy Eye, survey crew found found a 1 1/2" Rebar iron at the surface of the bituminous county road. This location seems reasonable and is accepted as the corner.