

# CERTIFICATE OF LOCATION OF GOVERNMENT CORNER

EAST QUARTER Corner of Section 2, Township 114, Range 39, 5TH P.M.

STATE OF MINNESOTA, County of YELLOW MEDICINE

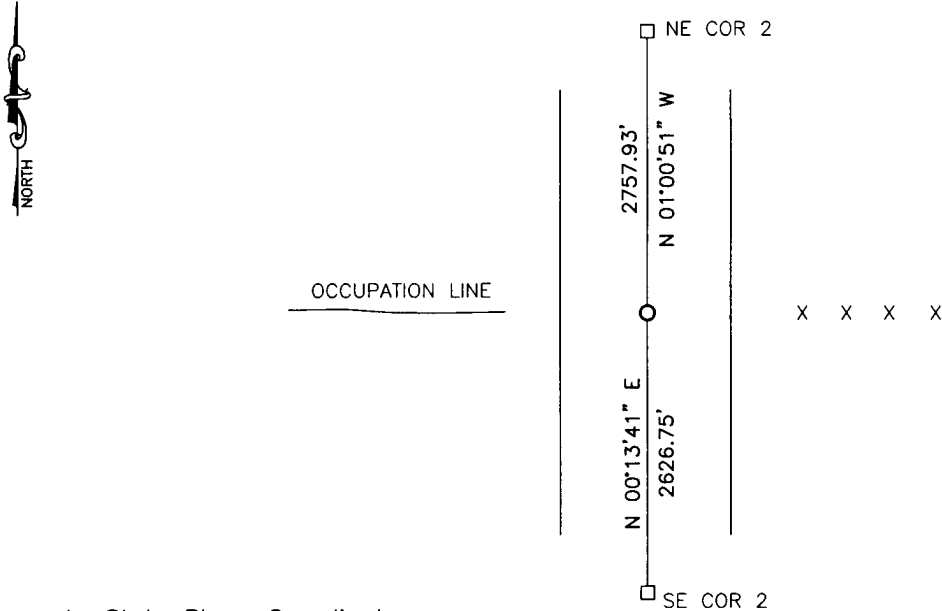
At the corner location shown on the sketch:

On 4/21/16 found a 10"x12"x20" stone  
DATE

left monument as found,  lowered monument,  removed monument (explain)

On 4/21/16 placed a 5/8" iron with seal #43844  
DATE

### SKETCH OF REFERENCE TIES



Minnesota State Plane Coordinate  
 System Yellow Medicine County Datum  
 NAD83 (1996)

N: 161244.675  
 E: 603224.963

Statement of evidence relative to this corner location is on back of page.

I hereby certify that this document and the data contained herein was prepared by me or under my direct supervision.

[Signature] 1/30/17  
SIGNATURE DATE

Registration No. 43844

- Land Surveyor,  Professional Engineer  
 County Surveyor,  County Engineer

**Doc# 265748 Fee: \$0.00 2 Pages**

Property & Public Services  
 Property Records Division  
 Yellow Medicine County, Minnesota  
 I hereby certify that the within instrument was filed on February 16, 2017 at 9:45 AM

Janel Timm, Yellow Medicine County Recorder

By [Signature] Deputy

## Statement of Evidence

In September, 1864, Chas E. Davis and J.W. Webb Jr. did the original subdivision of the township.

On May 19, 1885, County Surveyor, found pit and mound at the corner. He set a stone and post in place of the pit and mound.

On September 23, 1921, John Norgaard, County Surveyor, found a stake and a stone at the corner.

On September 23, 2013, Marihart Surveying found a monument at the corner.

On April 21, 2016, Bueltel-Moseng Land Surveying dug with a backhoe and found a 10"x12"x20" stone with a wood stake on the northeast of stone. We placed 3/8" iron on the west side of stone and a 5/8" iron with seal #43844 at the surface of road over stone.