

# CERTIFICATE OF LOCATION OF GOVERNMENT CORNER

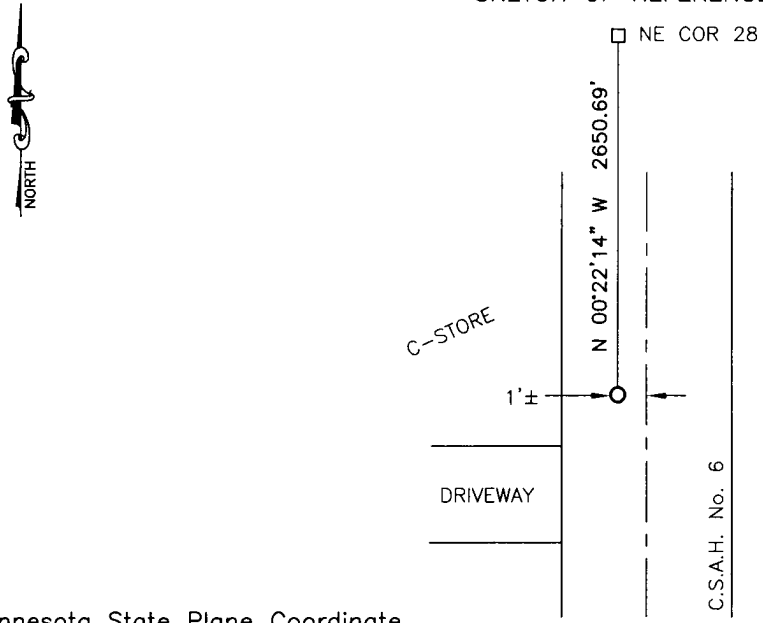
EAST QUARTER Corner of Section 28, Township 114, Range 39, 5TH P.M.

STATE OF MINNESOTA, County of YELLOW MEDICINE

At the corner location shown on the sketch:

- On \_\_\_\_\_ found a \_\_\_\_\_  
DATE
- left monument as found,  lowered monument,  removed monument (explain)
- On 9/16/16 placed a survey spike with seal #43844  
DATE

### SKETCH OF REFERENCE TIES



Minnesota State Plane Coordinate  
 System Yellow Medicine County Datum  
 NAD83 (1996)  
 N: 140192.098  
 E: 592776.627

Statement of evidence relative to this corner location is on back of page.

I hereby certify that this document and the data contained herein was prepared by me or under my direct supervision.

[Signature] 2/2/17  
 SIGNATURE DATE

Registration No. 43844

- Land Surveyor,  Professional Engineer
- County Surveyor,  County Engineer

**Doc# 265749 Fee: \$0.00 2 Pages**

Property & Public Services  
 Property Records Division  
 Yellow Medicine County, Minnesota  
 I hereby certify that the within instrument  
 was filed on February 16, 2017 at 9:50 AM

Janel Timm, Yellow Medicine County Recorder

By [Signature] Deputy

## Statement of Evidence

In September, 1864, Chas E. Davis and J.W. Webb Jr. did the original subdivision of the township.

On November 19, 1891, Jonah Peterson, County Surveyor, set a post midway and on line between the section corners.

On July 15, 1992, Moseng Land Surveying found a 3/4" iron pipe at the corner and set 5/8" iron over the pipe.

In November, 2004, Bueltel-Moseng Land Surveying found a 5/8" iron with seal #11943 at the corner.

In April, 2010, the Yellow Medicine County Highway Department found a 5/8" iron with seal #11943.

On September 16, 2016, Bueltel-Moseng Land Surveying set a survey spike with seal #43844 by using county coordinates provided by Yellow Medicine County Highway Department.