

CERTIFICATE OF LOCATION OF GOVERNMENT CORNER

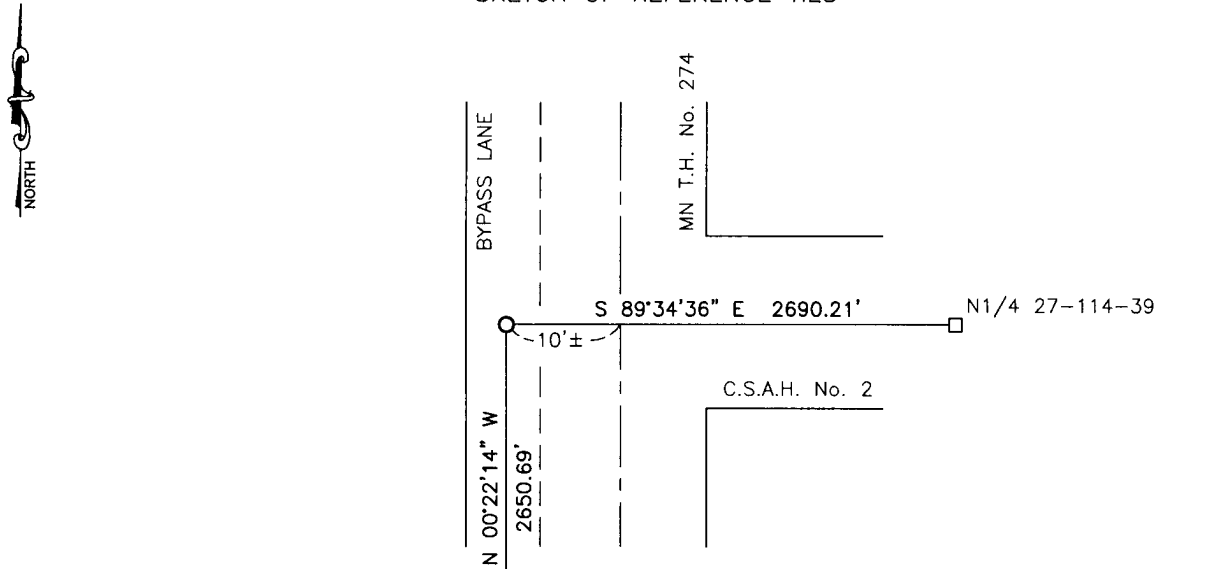
NORTHEAST Corner of Section 28, Township 114, Range 39, 5TH P.M.

STATE OF MINNESOTA, County of YELLOW MEDICINE

At the corner location shown on the sketch:

- On _____ found a _____
DATE
- left monument as found, lowered monument, removed monument (explain)
- On 9/16/16 placed a survey spike with seal #43844
DATE

SKETCH OF REFERENCE TIES



Minnesota State Plane Coordinate System Yellow Medicine County Datum NAD83 (1996)
E1/4 COR 28-114-39

N: 142842.734
E: 592759.478

Corner is 10'± west of centerline

Statement of evidence relative to this corner location is on back of page.

I hereby certify that this document and the data contained herein was prepared by me or under my direct supervision.

[Signature] 2/2/17
SIGNATURE DATE

Registration No. 43844

- Land Surveyor, Professional Engineer
- County Surveyor, County Engineer

Doc# 265750 Fee: \$0.00 2 Pages

Property & Public Services
Property Records Division
Yellow Medicine County, Minnesota
I hereby certify that the within instrument was filed on February 16, 2017 at 9:55 AM

Janel Timm, Yellow Medicine County Recorder

By [Signature] Deputy

Statement of Evidence

In September, 1864, Chas E. Davis and J.W. Webb Jr. did the original subdivision of the township.

On November 19, 1891, Jonah Peterman, County Surveyor, found a stone at the corner.

(No date), MnDot set a cast iron monument 10'± west centerline of road.

On July 15, 1992, Moseng Land Surveying found a cast iron monument at the corner. He set a 5/8" iron with seal #11943 over found monument.

In November, 2004, Bueltel-Moseng Land Surveying found a 5/8" iron with seal #11943 at the corner.

In April, 2010, the Yellow Medicine County Highway Department found a 5/8" iron with seal #11943.

On September 16, 2016, Bueltel-Moseng Land Surveying set a survey spike with seal #43844 by using county coordinates provided by Yellow Medicine County Highway Department.