

CERTIFICATE OF LOCATION OF GOVERNMENT CORNER

EAST QUARTER Corner of Section 3, Township 114, Range 42, 5TH P.M.

STATE OF MINNESOTA, County of YELLOW MEDICINE

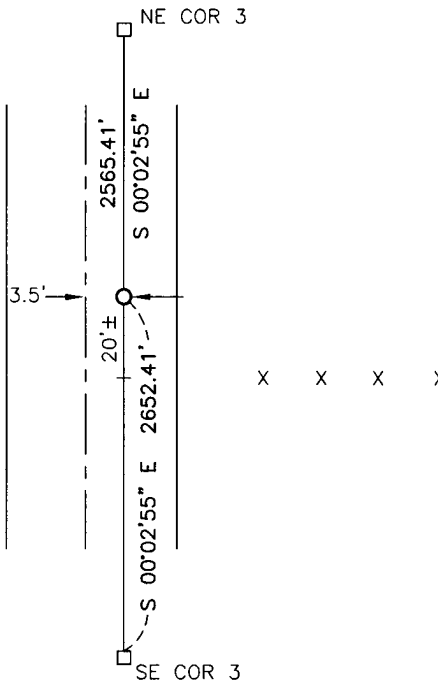
At the corner location shown on the sketch:

On 11/15/16 found a 5/8" iron with seal #19092. We removed to dig for stone.
DATE

left monument as found, lowered monument, removed monument (explain)

On 11/15/16 placed a 5/8" iron with seal #43844
DATE

SKETCH OF REFERENCE TIES

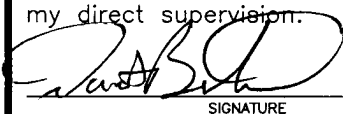


Minnesota State Plane Coordinate
System Yellow Medicine County Datum
NAD83 (1996)

N: 161645.475
E: 502556.790

Statement of evidence relative to this corner location is on back of page.

I hereby certify that this document and the data contained herein was prepared by me or under my direct supervision.



SIGNATURE

1/31/17
DATE

Registration No. 43844

- Land Surveyor, Professional Engineer
- County Surveyor, County Engineer

Doc# 265751 Fee: \$0.00 2 Pages

Property & Public Services
Property Records Division
Yellow Medicine County, Minnesota
I hereby certify that the within instrument
was filed on February 16, 2017 at 10:00 AM

Janel Timm, Yellow Medicine County Recorder

By Debra Blood Deputy

Statement of Evidence

In 1867, David Watson did the original subdivision of the township.

In July, 1927, John Norgaard, County Surveyor, established the corner by proportionate distances between the section corners.

On November 15, 2016, Bueltel-Moseng Land Surveying found a 5/8" iron with seal #19092 at the corner. We removed the iron and dug by hand, we found nothing. We set 5/8" iron with seal #43844 at location of 5/8" iron with seal #19092. It is at proportionate distances and on line between the section corners. It is 20'± north of the fence to the east and 3.5'± east of centerline of the road.