

CERTIFICATE OF LOCATION OF GOVERNMENT CORNER

NORTH QUARTER Corner of Section 3, Township 114, Range 42, 5TH P.M.

STATE OF MINNESOTA, County of YELLOW MEDICINE

At the corner location shown on the sketch:

On _____ found a _____
DATE

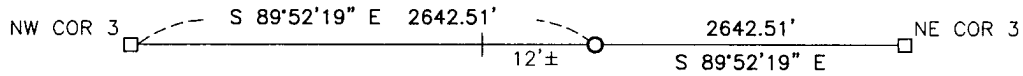
left monument as found, lowered monument, removed monument (explain)

On 11/15/16 placed a survey spike with seal #43844
DATE

SKETCH OF REFERENCE TIES



X
X
X



Minnesota State Plane Coordinate
System Yellow Medicine County Datum
NAD83 (1996)
N: 164216.792
E: 499912.104

Statement of evidence relative to this corner location is on back of page.

I hereby certify that this document and the data contained herein was prepared by me or under my direct supervision.

[Signature] 1/31/17
SIGNATURE DATE

Registration No. 43844

- Land Surveyor, Professional Engineer
- County Surveyor, County Engineer

Doc# 265752 Fee: \$0.00 2 Pages

Property & Public Services
Property Records Division
Yellow Medicine County, Minnesota
I hereby certify that the within instrument was filed on February 16, 2017 at 10:05 AM

Janel Timm, Yellow Medicine County Recorder

By [Signature] Deputy

Statement of Evidence

In 1858, W.J. Neely did the original survey of the north line of the township.

On November 15, 2016, Bueltel-Moseng Land Surveying set a survey spike with seal #43844 midway and online between the section corners. It is in centerline of the road and 12'± east of fence to the north.