

# CERTIFICATE OF LOCATION OF GOVERNMENT CORNER

EAST QUARTER Corner of Section 4, Township 114, Range 42, 5TH P.M.

STATE OF MINNESOTA, County of YELLOW MEDICINE

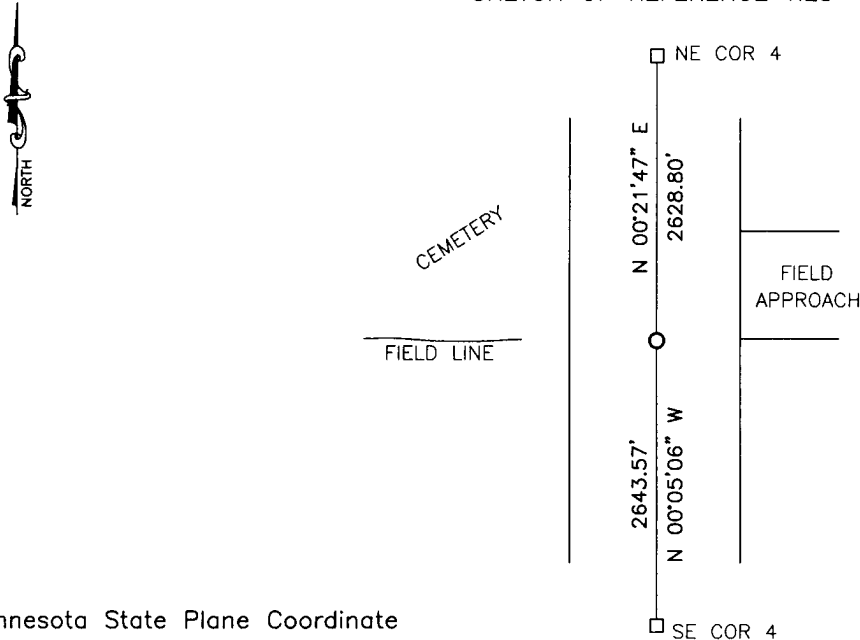
At the corner location shown on the sketch:

On 11/15/16 found a PK nail

left monument as found,  lowered monument,  removed monument (explain)

On \_\_\_\_\_ placed a \_\_\_\_\_

### SKETCH OF REFERENCE TIES



Minnesota State Plane Coordinate  
System Yellow Medicine County Datum  
NAD83 (1996)

N: 161593.962  
E: 497252.941

Statement of evidence relative to this corner location is on back of page.

I hereby certify that this document and the data contained herein was prepared by me or under my direct supervision.

[Signature] 1/31/17  
SIGNATURE DATE

Registration No. 43844

- Land Surveyor,  Professional Engineer
- County Surveyor,  County Engineer

**Doc# 265754 Fee: \$0.00 2 Pages**

Property & Public Services  
Property Records Division  
Yellow Medicine County, Minnesota  
I hereby certify that the within instrument was filed on February 16, 2017 at 10:15 AM

Janel Timm, Yellow Medicine County Recorder

By [Signature] Deputy

## Statement of Evidence

In 1867, David Watson did the original subdivision of the township.

On November 15, 2016, Bueltel-Moseng Land Surveying found a PK nail at the corner. It is in line with occupation line to the west and in centerline of the road.