

# CERTIFICATE OF LOCATION OF GOVERNMENT CORNER

NORTHEAST Corner of Section 4, Township 114, Range 42, 5TH P.M.

STATE OF MINNESOTA, County of YELLOW MEDICINE

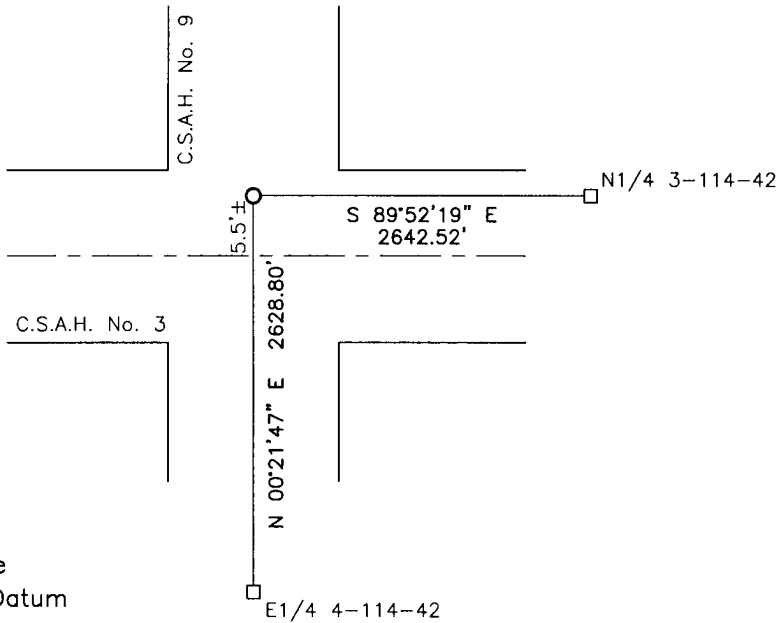
At the corner location shown on the sketch:

On 11/15/16 found a PK nail

left monument as found,  lowered monument,  removed monument (explain)

On \_\_\_\_\_ placed a \_\_\_\_\_

### SKETCH OF REFERENCE TIES



Minnesota State Plane Coordinate  
System Yellow Medicine County Datum  
NAD83 (1996)

N: 164222.704  
E: 497269.596

Statement of evidence relative to this corner location is on back of page.

I hereby certify that this document and the data contained herein was prepared by me or under my direct supervision.

[Signature] 1/31/17  
SIGNATURE DATE

Registration No. 43844

- Land Surveyor,  Professional Engineer
- County Surveyor,  County Engineer

**Doc# 265755 Fee: \$0.00 2 Pages**

Property & Public Services  
Property Records Division  
Yellow Medicine County, Minnesota  
I hereby certify that the within instrument  
was filed on February 16, 2017 at 10:20 AM

Janel Timm, Yellow Medicine County Recorder

By [Signature] Deputy

## Statement of Evidence

In 1858, W.J. Neely did the original survey of the north line of the township.

(No date), Yellow Medicine County Highway Department recorded a PK nail at the corner.

On November 15, 2016, Bueltel-Moseng Land Surveying found a PK nail. It is in the centerline of the north-south road and 5.5'± north of the east-west road.