

# CERTIFICATE OF LOCATION OF GOVERNMENT CORNER

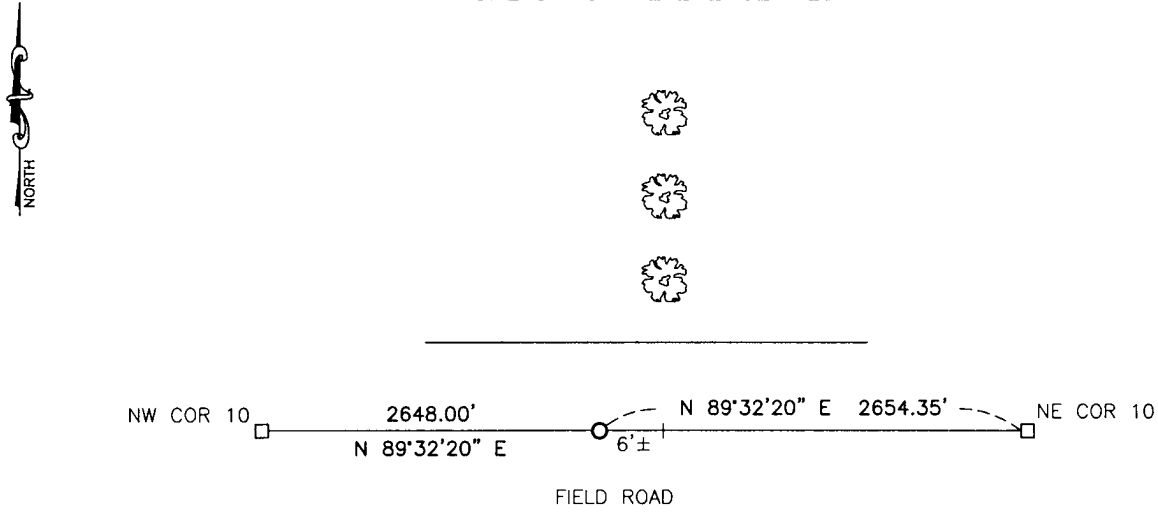
NORTH QUARTER Corner of Section 10, Township 114, Range 42, 5TH P.M.

STATE OF MINNESOTA, County of YELLOW MEDICINE

At the corner location shown on the sketch:

- On \_\_\_\_\_ found a \_\_\_\_\_  
DATE
- left monument as found,  lowered monument,  removed monument (explain)
- On 11/15/16 placed a 5/8" iron with seal #43844  
DATE

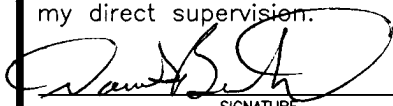
### SKETCH OF REFERENCE TIES



Minnesota State Plane Coordinate  
 System Yellow Medicine County Datum  
 NAD83 (1996)  
 N: 158971.705  
 E: 499904.777

Statement of evidence relative to this corner location is on back of page.

I hereby certify that this document and the data contained herein was prepared by me or under my direct supervision.

  
 SIGNATURE 1/31/17  
 DATE

Registration No. 43844

- Land Surveyor,  Professional Engineer
- County Surveyor,  County Engineer

**Doc# 265758 Fee: \$0.00 2 Pages**

Property & Public Services  
 Property Records Division  
 Yellow Medicine County, Minnesota  
 I hereby certify that the within instrument  
 was filed on February 16, 2017 at 10:35 AM

Janel Timm, Yellow Medicine County Recorder

By  Deputy

## Statement of Evidence

In 1867, David Watson did the original subdivision of the township.

On August 27, 1910, John Norgaard, County Surveyor, set a stone in mound at the corner.

On November 15, 2016, Bueltel-Moseng Land Surveying dug with a backhoe and found nothing. We set a 5/8" iron with seal #43844 on line between the section corners and at recorded distance from the northwest corner of Section 10. It is 6'± west of tree line to the north.