

CERTIFICATE OF LOCATION OF GOVERNMENT CORNER

NORTH QUARTER Corner of Section 16, Township 115, Range 40, 5TH P.M.

STATE OF MINNESOTA, County of YELLOW MEDICINE

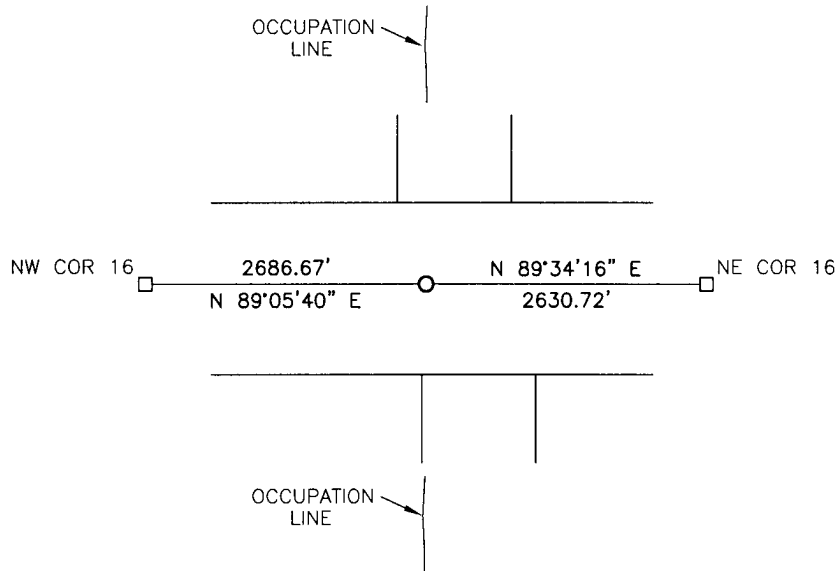
At the corner location shown on the sketch:

On _____ found a _____
DATE

left monument as found, lowered monument, removed monument (explain)

On 11/15/2016 placed a 5/8" iron with seal #43844
DATE

SKETCH OF REFERENCE TIES



Minnesota State Plane Coordinate
System Yellow Medicine County Datum
NAD83 (1996)

N: 185412.053
E: 558199.849

Statement of evidence relative to this corner location is on back of page.

I hereby certify that this document and the data contained herein was prepared by me or under my direct supervision.


SIGNATURE

12/8/16
DATE

Registration No. 43844

- Land Surveyor, Professional Engineer
- County Surveyor, County Engineer

Doc# 265759 Fee: \$0.00 2 Pages

Property & Public Services
Property Records Division
Yellow Medicine County, Minnesota
I hereby certify that the within instrument
was filed on February 16, 2017 at 10:40 AM

Janel Timm, Yellow Medicine County Recorder

By Debra Blood Deputy

Statement of Evidence

In 1864, C.E. Davis and J.W. Webb, Jr. did the original subdivision of the township.

No date, John Norgaard, County Surveyor, established the corner.

On November 15, 2016, Bueltel-Moseng Land Surveying dug with a backhoe and found nothing. We set an 5/8" iron with seal #43844 in the centerline of the road and in line with occupation lines to the north and south. The land owner to the north verified this location to be correct.