

CERTIFICATE OF LOCATION OF GOVERNMENT CORNER

EAST QUARTER Corner of Section 9, Township 115, Range 44, 5TH P.M.

STATE OF MINNESOTA, County of YELLOW MEDICINE

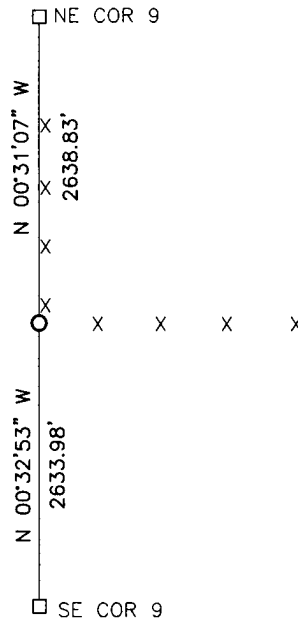
At the corner location shown on the sketch:

On _____ found a _____
DATE

left monument as found, lowered monument, removed monument (explain)

On 8/1/16 placed a 5/8" iron with seal #43844
DATE

SKETCH OF REFERENCE TIES



Minnesota State Plane Coordinate
System Yellow Medicine County Datum
NAD83 (1996)

N: 188144.990
E: 433820.344

Statement of evidence relative to this corner location is on back of page.

I hereby certify that this document and the data contained herein was prepared by me or under my direct supervision.

[Signature] 1/26/17
SIGNATURE DATE

Registration No. 43844

- Land Surveyor, Professional Engineer
- County Surveyor, County Engineer

Doc# 265762 Fee: \$0.00 2 Pages

Property & Public Services
Property Records Division
Yellow Medicine County, Minnesota
I hereby certify that the within instrument was filed on February 16, 2017 at 10:55 AM

Janel Timm, Yellow Medicine County Recorder

By [Signature] Deputy

Statement of Evidence

In September, 1871, L. Harrington did the original subdivision of the township.

On August 1, 2016, Bueltel-Moseng Land Surveying searched for corner and found nothing. We set a 5/8" iron with seal #43844 next to an old corner fence post. It is in line with the fence to the north and the east.