

CERTIFICATE OF LOCATION OF GOVERNMENT CORNER

EAST QUARTER Corner of Section 31, Township 113, Range 39, 5TH P.M.

STATE OF MINNESOTA, County of YELLOW MEDICINE

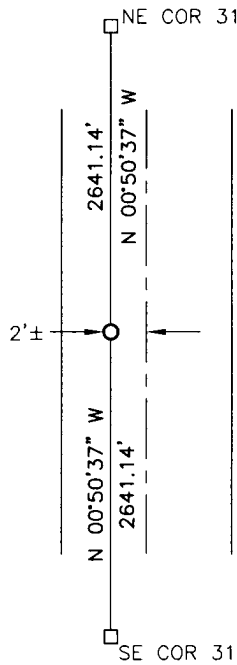
At the corner location shown on the sketch:

On _____ found a _____
DATE

left monument as found, lowered monument, removed monument (explain)

On 4/21/16 placed a 5/8" iron with seal #50343
DATE

SKETCH OF REFERENCE TIES



Minnesota State Plane Coordinate
System Yellow Medicine County Datum
NAD83 (1996)

N: 103112.296
E: 582359.179

Statement of evidence relative to this corner location is on back of page.

I hereby certify that this document and the data contained herein was prepared by me or under my direct supervision.

[Signature] SIGNATURE 1/26/17 DATE

Registration No. 50343

- Land Surveyor, Professional Engineer
- County Surveyor, County Engineer

Doc# 265767 Fee: \$0.00 2 Pages

Property & Public Services
Property Records Division
Yellow Medicine County, Minnesota
I hereby certify that the within instrument
was filed on February 16, 2017 at 11:20 AM

Janel Timm, Yellow Medicine County Recorder

By [Signature] Deputy

Statement of Evidence

In September, 1864, Chas. E. David and J.W. Webb Jr. did the original subdivision of the township.

In October, 1913, John Norgaard, County Surveyor set a stone on line and equal distances between the section corners.

On April 21, 2016, Bueltel-Moseng Land Surveying set a 5/8" iron with seal #50343 midway and on line between the section corners. It is 2'± west of centerline of the road.