

# CERTIFICATE OF LOCATION OF GOVERNMENT CORNER

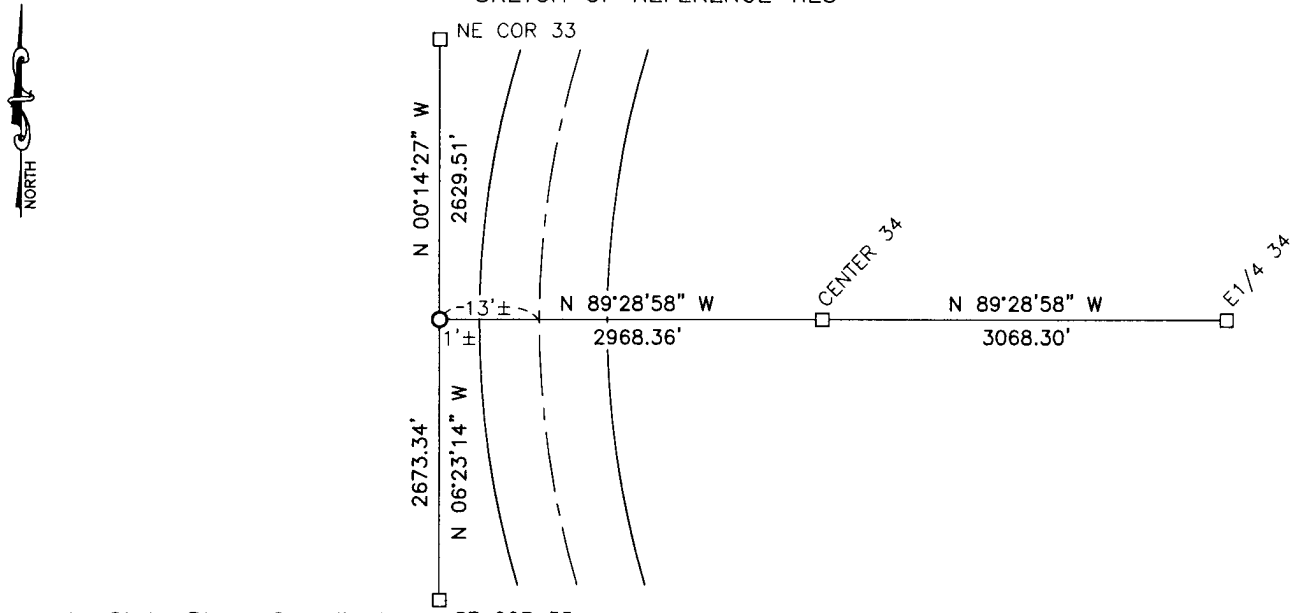
EAST QUARTER Corner of Section 33, Township 114, Range 40, 5TH P.M.

STATE OF MINNESOTA, County of YELLOW MEDICINE

At the corner location shown on the sketch:

- On \_\_\_\_\_ found a \_\_\_\_\_  
DATE
- left monument as found,  lowered monument,  removed monument (explain)
- On 3/18/16 placed a 5/8" iron with seal #50343  
DATE

SKETCH OF REFERENCE TIES



Minnesota State Plane Coordinate System Yellow Medicine County Datum NAD83 (1996)

Corner is 13' ± west of centerline  
 Corner is 1' ± west of edge of asphalt

N: 135076.969  
 E: 560785.099

Statement of evidence relative to this corner location is on back of page.

I hereby certify that this document and the data contained herein was prepared by me or under my direct supervision.

*[Signature]*  
 SIGNATURE 1/26/17  
 DATE

Registration No. 50343

- Land Surveyor,  Professional Engineer  
 County Surveyor,  County Engineer

**Doc# 265768 Fee: \$0.00 2 Pages**

Property & Public Services  
 Property Records Division  
 Yellow Medicine County, Minnesota  
 I hereby certify that the within instrument was filed on February 16, 2017 at 11:25 AM

Janel Timm, Yellow Medicine County Recorder

By *[Signature]* Deputy

## Statement of Evidence

In September, 1864, C.E. Davis and J.W. Webb Jr. did the original subdivision of the township.

In 1916, John Norgaard, County Surveyor, found a stake at the corner.

On March 18, 2016, Bueltel-Moseng Land Surveying set a 5/8" iron with seal #50343 by projecting line from the east quarter of Section 34 through a found 2" pipe at center of Section 34 and by using proportionate distances from 1916 survey corner. The corner fell 1'± west of edge of asphalt and 13'± west of centerline of the road.