

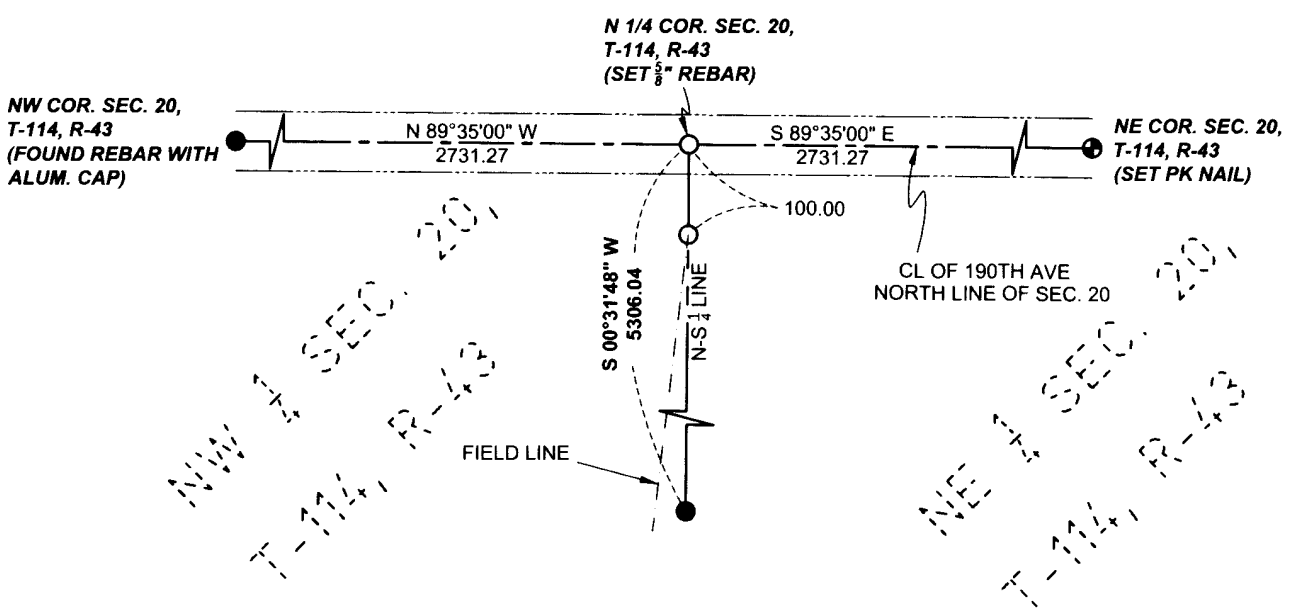
# Certificate of Location of Government Corner

NORTH 1/4 Corner of Section 20 Township 114 N Range 43 W 5th P.M.

STATE OF MINNESOTA, County of Yellow Medicine

At the corner location shown on the sketch:

- On \_\_\_\_\_ found a \_\_\_\_\_
- Left monument as found                     
  Lowered Monument                     
  Removed Monument (explain)
- On 02/22/2017 set a  $\frac{5}{8}$ " IRON REBAR WITH PLASTIC CAP MARKED LS 49506 \_\_\_\_\_



**LEGEND**

- FOUND IRON MONUMENT
- SET  $\frac{5}{8}$ " REBAR WITH CAP MARKED LS 49506
- ⊙ SET PK NAIL

NAD83 (2011 ADJUSTMENT)  
 YELLOW MEDICINE COUNTY  
 N:148259.44  
 E:457670.72

Statement of evidence relative to this corner location is on back page

Drawn By Jesse Bengtson

Checked By: Jesse Bengtson

I hereby certify that this survey, plan, or report was prepared by me or under my direct supervision and that I am a duly Licensed Land Surveyor under the laws of the State of Minnesota, and that this certificate of location of government corner is correct and complete to the best of my knowledge and belief.

\_\_\_\_\_ 3/16/2017  
 Jesse T. Bengtson LS 49506 Date  
 County Surveyor                     
  Land Surveyor

## OFFICE OF THE COUNTY RECORDER

County of Yellow Medicine

I hereby certify that this document was filed in the County  
 Records office at \_\_\_\_\_ M. on the \_\_\_\_\_ day of  
 \_\_\_\_\_ A.D., 20\_\_\_\_.

County Recorder \_\_\_\_\_  
 By \_\_\_\_\_  
 Document No. \_\_\_\_\_

## ***Statement of Evidence***

NORTH 1/4 Corner of Section 20 Township 114 N Range 43 W 5th P.M.

STATE OF MINNESOTA, County of Yellow Medicine

1867 - Deputy Surveyor David Watson set  $\frac{1}{4}$  post in mound with charred stake and pits.

February 22nd, 2017 - Jesse T. Bengtson performed a survey of the  $W\frac{1}{2}$  of the  $SE\frac{1}{4}$  and the  $W\frac{1}{2}$  of the  $NE\frac{1}{4}$  of Section 20. Set a  $\frac{5}{8}$ " Rebar using single proportion between the Northeast corner and Northwest corner of Section 20. Position fits with a field line to the south. The North-South Quarter line fits the old fence line/old field line at both the North Quarter corner and the South Quarter corner. However, said Field line does not run in a straight line, it protrudes westerly approximately 20 feet in the center of the section.

**Doc# 265940 Fee: \$0.00 2 Pages**

Property & Public Services  
Property Records Division  
Yellow Medicine County, Minnesota

I hereby certify that the within instrument  
was filed on March 22, 2017 at 9:35 AM

Janel Timm, Yellow Medicine County Recorder

By Kelley Kauger Deputy