

CERTIFICATE OF LOCATION OF GOVERNMENT CORNER

EAST QUARTER Corner of Section 26, Township 114, Range 38, 5TH P.M.

STATE OF MINNESOTA, County of YELLOW MEDICINE

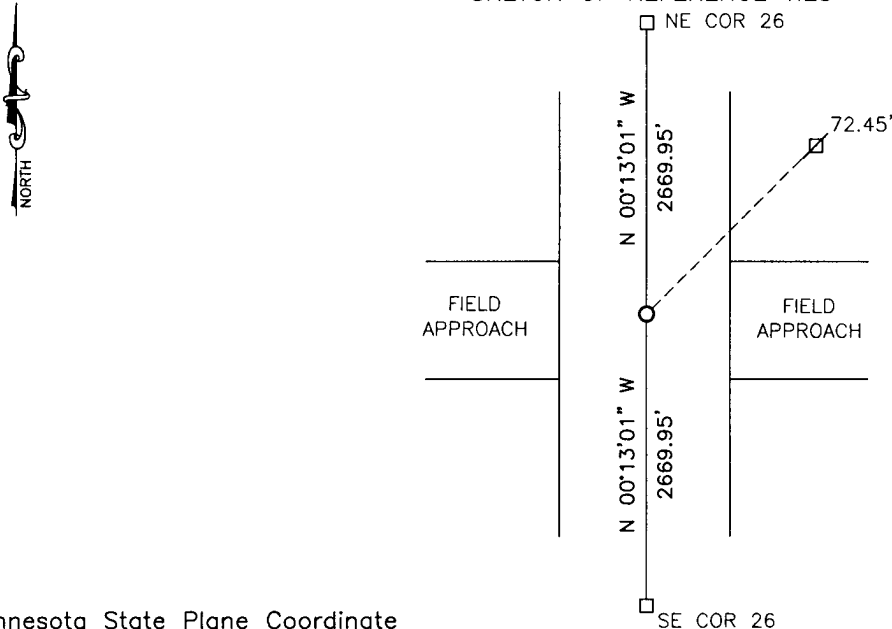
At the corner location shown on the sketch:

On _____ found a _____
DATE

left monument as found, lowered monument, removed monument (explain)

On 2/22/17 placed a 5/8" iron with seal #43844
DATE

SKETCH OF REFERENCE TIES



Minnesota State Plane Coordinate
System Yellow Medicine County Datum
NAD83 (1996)

N: 140160.899
E: 635107.542

Nail and bottle cap in utility pole NE 72.45'

Statement of evidence relative to this corner location is on back of page.

I hereby certify that this document and the data contained herein was prepared by me or under my direct supervision.

[Signature] 3/1/17
SIGNATURE DATE

Registration No. 43844

- Land Surveyor, Professional Engineer
- County Surveyor, County Engineer

OFFICE OF THE COUNTY RECORDER

County of _____

I hereby certify that this document was filed in the Co. Recorders office at _____ .M on the _____ day of _____ A.D. 20 _____

County Recorder _____

By _____, Deputy

DOCUMENT NO. _____

Statement of Evidence

In 1864, Chas E. Davis and J.W. Webb Jr. did the original subdivision of the township.

In 1919, John Norgaard, County Surveyor, established the corner to be midway and on line. He did not note he set anything at the corner.

On February 22, 2017, Bueltel-Moseng Land Surveying set a 5/8" iron with seal #43844 midway and on line between the section corners.

Doc# 266110 Fee: \$0.00 2 Pages
Property & Public Services
Property Records Division
Yellow Medicine County, Minnesota
I hereby certify that the within instrument
was filed on April 17, 2017 at 10:25 AM

Janel Timm, Yellow Medicine County Recorder

By Kelly Kruger Deputy