

# CERTIFICATE OF LOCATION OF GOVERNMENT CORNER

EAST QUARTER Corner of Section 27, Township 114, Range 39, 5TH P.M.

STATE OF MINNESOTA, County of YELLOW MEDICINE

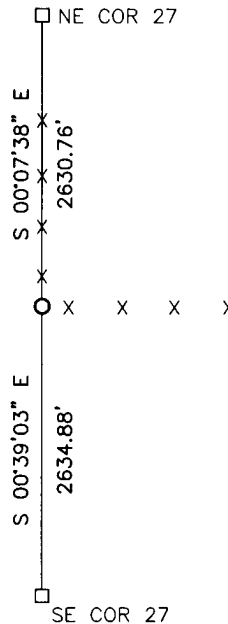
At the corner location shown on the sketch:

On \_\_\_\_\_ found a \_\_\_\_\_  
DATE

left monument as found,  lowered monument,  removed monument (explain)

On 12/5/16 placed a 5/8" iron with seal #43844  
DATE

SKETCH OF REFERENCE TIES



Minnesota State Plane Coordinate  
System Yellow Medicine County Datum  
NAD83 (1996)

N: 140172.802  
E: 598088.996

Statement of evidence relative to this corner location is on back of page.

I hereby certify that this document and the data contained herein was prepared by me or under my direct supervision.

*[Signature]* 2/16/17  
SIGNATURE DATE

Registration No. 43844

Land Surveyor,  Professional Engineer  
 County Surveyor,  County Engineer

OFFICE OF THE COUNTY RECORDER

County of \_\_\_\_\_

I hereby certify that this document was filed in the Co. Recorders office at \_\_\_\_\_ .M on the \_\_\_\_\_ day of \_\_\_\_\_ A.D. 20 \_\_\_\_\_

County Recorder \_\_\_\_\_

By \_\_\_\_\_, Deputy

DOCUMENT NO. \_\_\_\_\_

## Statement of Evidence

In September 1864, Chas E. Davis and J.W. Webb Jr. did the original subdivision of the township.

On November 20, 1891, Jonah Peterman, County Surveyor, set a stone at the corner.

On December 5, 2016, Bueltel-Moseng Land Surveying set a 5/8" iron with seal #43844 in line with fence to the north and at the recorded distance from the northeast corner of Section 27-114-39, recorded on the 1891 survey. It is in line with the fence to the east.

**Doc# 266112 Fee: \$0.00 2 Pages**

Property & Public Services

Property Records Division

Yellow Medicine County, Minnesota

I hereby certify that the within instrument  
was filed on April 17, 2017 at 10:35 AM

Janel Timm, Yellow Medicine County Recorder

By Kelly Kruger Deputy