

CERTIFICATE OF LOCATION OF GOVERNMENT CORNER

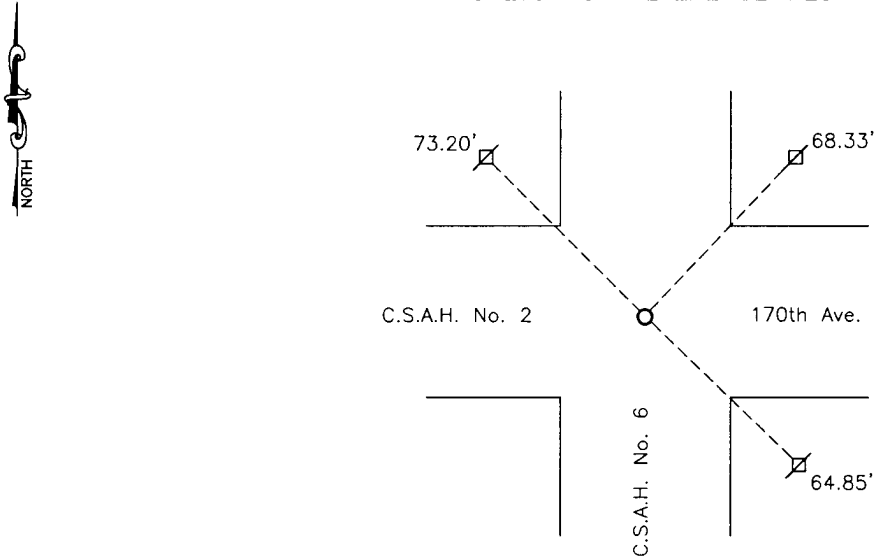
NORTHEAST Corner of Section 33, Township 114, Range 39, 5TH P.M.

STATE OF MINNESOTA, County of YELLOW MEDICINE

At the corner location shown on the sketch:

- On _____ found a _____
DATE
- left monument as found, lowered monument, removed monument (explain)
- On 12/5/16 placed a survey spike with seal #43844
DATE

SKETCH OF REFERENCE TIES



Minnesota State Plane Coordinate
System Yellow Medicine County Datum
NAD83 (1996)

N: 137537.689
E: 592829.958

Nail and bottle cap in utility pole NW 73.20'
Nail and bottle cap in utility pole NE 68.33'
Nail and bottle cap in utility pole SE 64.85'

Statement of evidence relative to this corner location is on back of page.

I hereby certify that this document and the data contained herein was prepared by me or under my direct supervision.

[Signature] 2/27/17
SIGNATURE DATE

Registration No. 43844

- Land Surveyor, Professional Engineer
- County Surveyor, County Engineer

OFFICE OF THE COUNTY RECORDER

County of _____

I hereby certify that this document was filed in the Co. Recorders office at _____ .M on the _____ day of _____ A.D. 20 ____

County Recorder _____

By _____, Deputy

DOCUMENT NO. _____

Statement of Evidence

In September, 1864, Chas E. Davis and J.W. Webb Jr. did the original subdivision of the township.

On November 19, 1891, Jonah Peterman, County Surveyor, found a stone at the corner.

In 1939, the Yellow Medicine County Highway Department found a 1" iron pipe was set at the corner.

In 1963, the Yellow Medicine County Highway Department recorded the corner as assumed.

On December 5, 2016, Bueltel-Moseng Land Surveying set a survey spike with seal #43844 by using the Yellow Medicine County Highway Department old stationing highway plans from the southeast corner of Section 33-114-39.

Doc# 266113 Fee: \$0.00 2 Pages

Property & Public Services

Property Records Division

Yellow Medicine County, Minnesota

I hereby certify that the within instrument
was filed on April 17, 2017 at 10:40 AM

Janel Timm, Yellow Medicine County Recorder

By Kelly Kauger Deputy