

# CERTIFICATE OF LOCATION OF GOVERNMENT CORNER

NORTH QUARTER Corner of Section 34, Township 114, Range 39, 5TH P.M.

STATE OF MINNESOTA, County of YELLOW MEDICINE

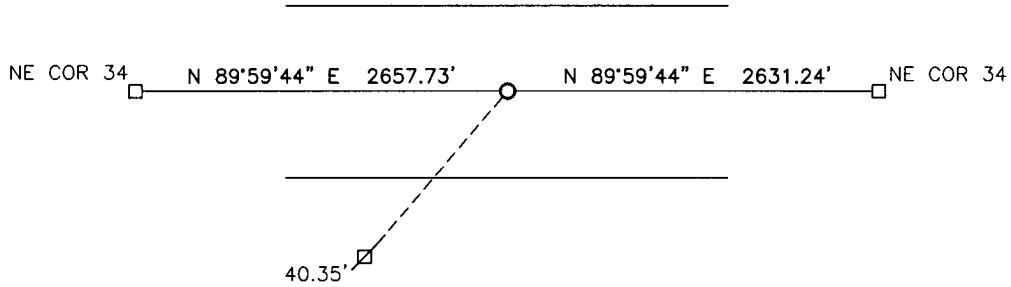
At the corner location shown on the sketch:

On \_\_\_\_\_ found a \_\_\_\_\_  
DATE

left monument as found,  lowered monument,  removed monument (explain)

On 12/5/16 placed a 5/8" iron with seal #43844  
DATE

### SKETCH OF REFERENCE TIES



Minnesota State Plane Coordinate  
System Yellow Medicine County Datum  
NAD83 (1996)

N: 137537.893  
E: 595487.688

Nail and survey marker in utility pole SW 40.35'

Statement of evidence relative to this corner location is on back of page.

I hereby certify that this document and the data contained herein was prepared by me or under my direct supervision.

  
SIGNATURE 2/27/17  
DATE

Registration No. 43844

Land Surveyor,  Professional Engineer  
 County Surveyor,  County Engineer

OFFICE OF THE COUNTY RECORDER

County of \_\_\_\_\_

I hereby certify that this document was filed in the Co. Recorders office at \_\_\_\_\_ .M on the \_\_\_\_\_ day of \_\_\_\_\_ A.D. 20 \_\_\_\_\_

County Recorder \_\_\_\_\_

By \_\_\_\_\_, Deputy

DOCUMENT NO. \_\_\_\_\_

## Statement of Evidence

In September, 1864, Chas E. Davis and J.W. Webb Jr. did the original subdivision of the township.

On November 19, 1891, Jonah Peterson, County Surveyor, shows distances in between the section corners to establish the corner.

On December 5, 2016, Bueltel-Moseng Land Surveying set a 5/8" iron with seal #43844 on line and at proportionate distances from the 1891 survey.

**Doc# 266114 Fee: \$0.00 2 Pages**

Property & Public Services

Property Records Division

Yellow Medicine County, Minnesota

I hereby certify that the within instrument  
was filed on April 17, 2017 at 10:45 AM

Janel Timm, Yellow Medicine County Recorder

By Kelly Kauger Deputy