

CERTIFICATE OF LOCATION OF GOVERNMENT CORNER

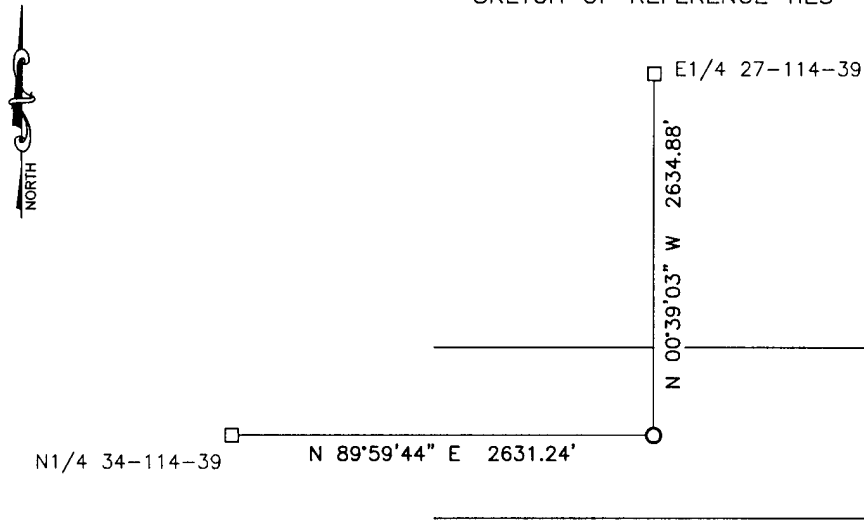
NORTHEAST Corner of Section 34, Township 114, Range 39, 5TH P.M.

STATE OF MINNESOTA, County of YELLOW MEDICINE

At the corner location shown on the sketch:

- On 12/5/16 found a county spike in hub
DATE
- left monument as found, lowered monument, removed monument (explain)
- On 12/5/16 placed a 5/8" iron with seal #43844
DATE

SKETCH OF REFERENCE TIES



Minnesota State Plane Coordinate
System Yellow Medicine County Datum
NAD83 (1996)

N: 137538.095
E: 598118.928

Statement of evidence relative to this corner location is on back of page.

I hereby certify that this document and the data contained herein was prepared by me or under my direct supervision.

[Signature] 2/16/17
SIGNATURE DATE

Registration No. 43844

- Land Surveyor, Professional Engineer
- County Surveyor, County Engineer

OFFICE OF THE COUNTY RECORDER

County of _____

I hereby certify that this document was filed in the Co. Recorders office at _____ .M on the _____ day of _____ A.D. 20 _____

County Recorder _____

By _____, Deputy

DOCUMENT NO. _____

Statement of Evidence

In September, 1864, Chas E. Davis and J.W. Webb Jr. did the original subdivision of the township.

On November 19, 1891, Jonah Peterman, County Surveyor, found the corner.

On May, 1999, Moseng Land Surveying found a spike in wood stake at the corner.

On December 15, 2016, Bueltel-Moseng Land Surveying found a county spike in hub at the corner. We set a 5/8" iron with seal #43844 over found spike.

Doc# 266115 Fee: \$0.00 2 Pages

Property & Public Services

Property Records Division

Yellow Medicine County, Minnesota

I hereby certify that the within instrument

was filed on April 17, 2017 at 10:50 AM

Janel Timm, Yellow Medicine County Recorder

By Kelly Kanger Deputy