

# CERTIFICATE OF LOCATION OF GOVERNMENT CORNER

NORTHEAST Corner of Section 19, Township 113, Range 38, 5TH P.M.

STATE OF MINNESOTA, County of YELLOW MEDICINE

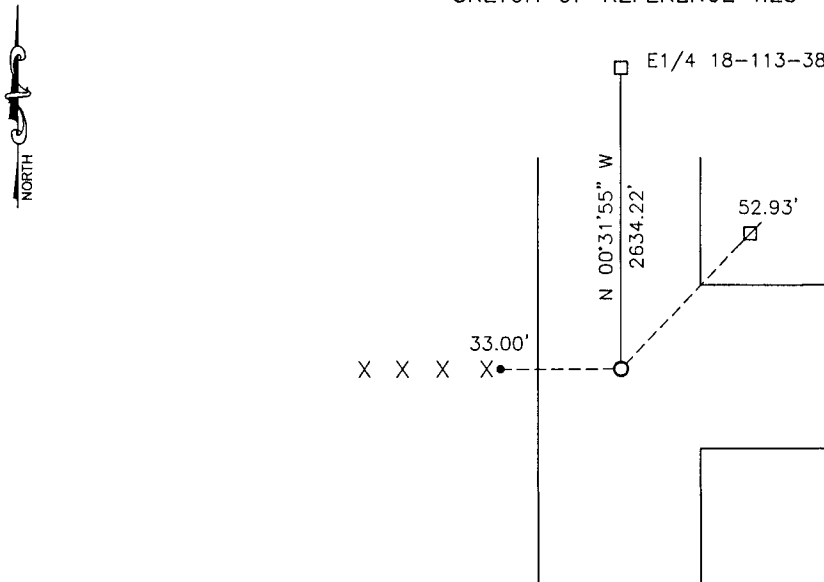
At the corner location shown on the sketch:

On 08-16-2017 found a STONE.

left monument as found,  lowered monument,  removed monument (explain)

On 08-16-2017 placed a 5/8" IRON WITH SEAL #50343 OVER STONE.

### SKETCH OF REFERENCE TIES



Minnesota State Plane Coordinate  
System Yellow Medicine County Datum  
NAD83 (1996)

N: 116293.917  
E: 614146.965

Nail and bottle cap in utility pole NE 52.93'  
5/8" iron with seal #50343 West 33.00'

Statement of evidence relative to this corner location is on back of page.

I hereby certify that this document and the data contained herein was prepared by me or under my direct supervision.

[Signature] 3/12/2018  
SIGNATURE DATE

Registration No. 50343

Land Surveyor,  Professional Engineer  
 County Surveyor,  County Engineer

Doc# 268086 Fee: \$0.00 2 Pages

Property & Public Services  
Property Records Division  
Yellow Medicine County, Minnesota  
I hereby certify that the within instrument was filed on March 28, 2018 at 9:35 AM

Janel Timm, Yellow Medicine County Recorder

By Kelly Kauger Deputy

## Statement of Evidence

In 1864, Chas E. Davis and J.W. Webb, Jr. did the original subdivision of the township.

On August 16, 2017, Bueltel-Moseng Land Surveying found a bridge spike. We removed the spike and found a stone below it. We set a 5/8" iron with seal #50343 over the stone.