

# CERTIFICATE OF LOCATION OF GOVERNMENT CORNER

NORTHEAST Corner of Section 10, Township 113, Range 39, 5TH P.M.

STATE OF MINNESOTA, County of YELLOW MEDICINE

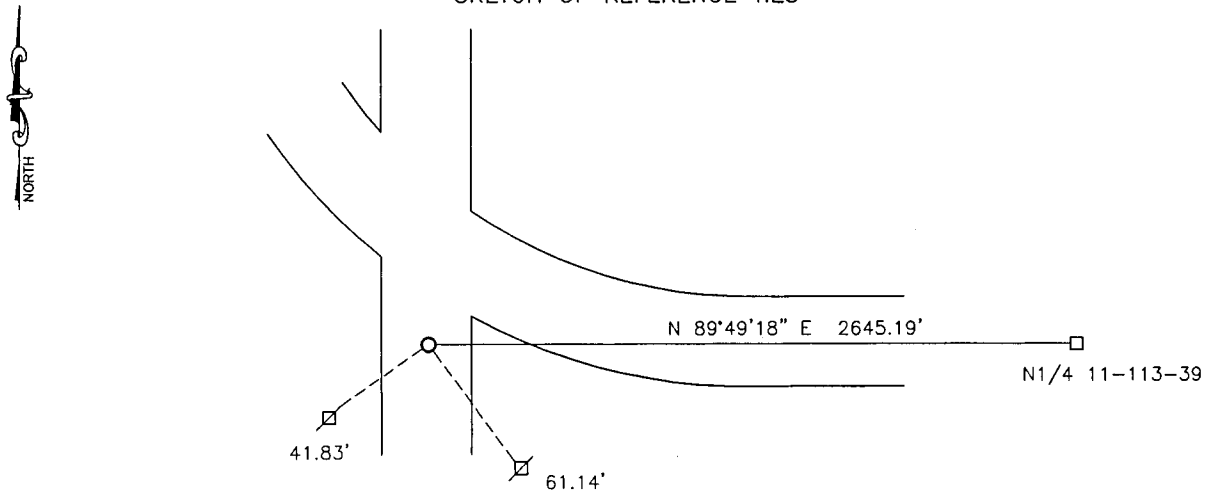
At the corner location shown on the sketch:

On 06-14-2017 found a LARGE BRIDGE SPIKE  
DATE

left monument as found,  lowered monument,  removed monument (explain)

On 06-14-2017 placed a 5/8" IRON WITH SEAL #43844.  
DATE

SKETCH OF REFERENCE TIES



Minnesota State Plane Coordinate  
System Yellow Medicine County Datum  
NAD83 (1996)

Nail and bottle cap in utility pole SW 41.83'  
Nail and bottle cap in utility pole SE 61.14'

N: 126832.653  
E: 598027.924

Statement of evidence relative to this corner location is on back of page.

I hereby certify that this document and the data contained herein was prepared by me or under my direct supervision

[Signature] 3/8/18  
SIGNATURE DATE

Registration No. 43844

Land Surveyor,  Professional Engineer  
 County Surveyor,  County Engineer

**Doc# 268087 Fee: \$0.00 2 Pages**

Property & Public Services  
Property Records Division  
Yellow Medicine County, Minnesota  
I hereby certify that the within instrument was filed on March 28, 2018 at 9:40 AM

Janel Timm, Yellow Medicine County Recorder

By [Signature] Deputy

## Statement of Evidence

In 1864, Chas E. Davis and J.W. Webb, Jr. did the original subdivision of the township.

The Yellow Medicine County Highway Department found a pin at the corner.

On June 14, 2017, Bueltel-Moseng Land Surveying found a large bridge spike at the corner. We removed it and set a 5/8" iron with seal #43844 in its place.