

CERTIFICATE OF LOCATION OF GOVERNMENT CORNER

NORTH QUARTER Corner of Section 11, Township 113, Range 39, 5TH P.M.

STATE OF MINNESOTA, County of YELLOW MEDICINE

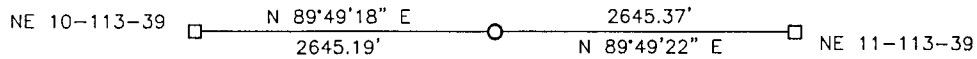
At the corner location shown on the sketch:

On 06-14-2017 found a PK NAIL
DATE

left monument as found, lowered monument, removed monument (explain)

On 06-14-2017 placed a SURVEY SPIKE WITH SEAL #43844.
DATE

SKETCH OF REFERENCE TIES



Minnesota State Plane Coordinate
 System Yellow Medicine County Datum
 NAD83 (1996)
 N: 126840.884
 E: 600673.102

Statement of evidence relative to this corner location is on back of page.

I hereby certify that this document and the data contained herein was prepared by me or under my direct supervision.

[Signature] 3/8/18
SIGNATURE DATE

Registration No. 43844

- Land Surveyor, Professional Engineer
 County Surveyor, County Engineer

Doc# 268088 Fee: \$0.00 2 Pages

Property & Public Services
 Property Records Division
 Yellow Medicine County, Minnesota
 I hereby certify that the within instrument was filed on March 28, 2018 at 9:45 AM

Janel Timm, Yellow Medicine County Recorder

By *[Signature]* Deputy

Statement of Evidence

In 1864, Chas E. Davis and J.W. Webb, Jr. did the original subdivision of the township.

On June 14, 2017, Bueltel-Moseng Land Surveying found a PK nail at the corner. We removed it and set a survey spike with seal #43844 in its place.