

CERTIFICATE OF LOCATION OF GOVERNMENT CORNER

_____ CENTER _____ of Section 16, Township 113, Range 39, 5TH P.M.

STATE OF MINNESOTA, County of YELLOW MEDICINE

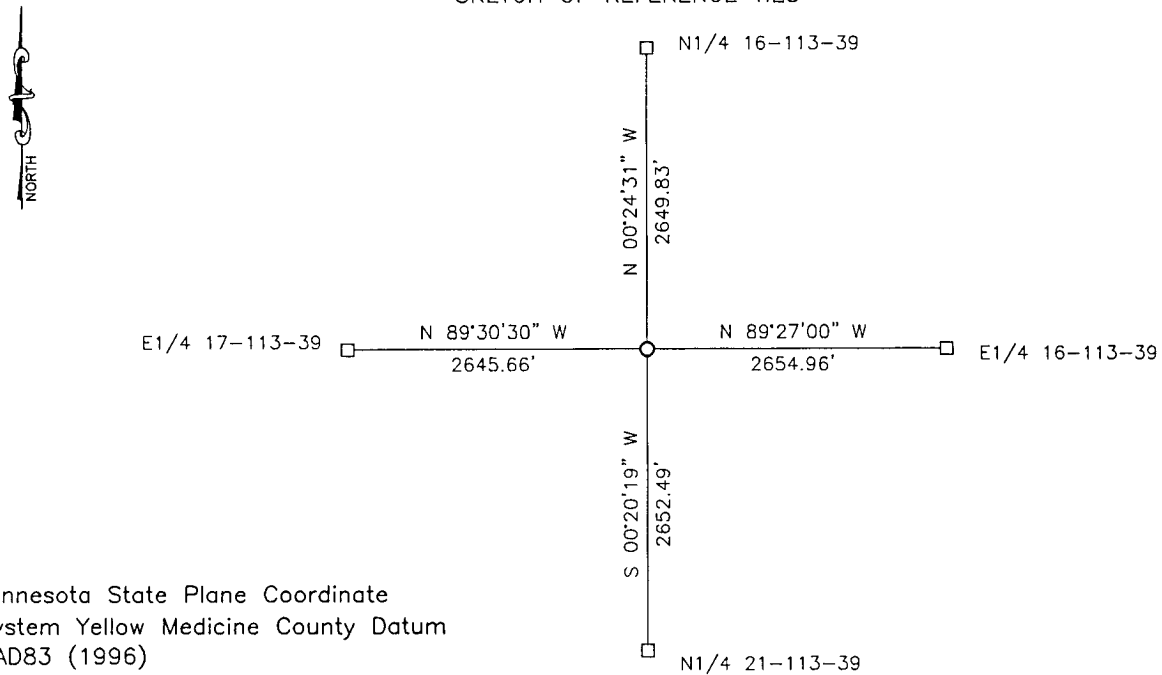
At the corner location shown on the sketch:

On 03-02-2017 found a FIELD STONE WITH 2 STEEL FENCE POST.
DATE

left monument as found, lowered monument, removed monument (explain)

On _____ placed a _____
DATE

SKETCH OF REFERENCE TIES



Minnesota State Plane Coordinate
 System Yellow Medicine County Datum
 NAD83 (1996)

N: 118983.595
 E: 590049.185

Statement of evidence relative to this corner location is on back of page.

I hereby certify that this document and the data contained herein was prepared by me or under my direct supervision.

[Signature] 3/2/18
SIGNATURE DATE

Registration No. 50343

Land Surveyor, Professional Engineer
 County Surveyor, County Engineer

Doc# 268090 Fee: \$0.00 2 Pages

Property & Public Services
 Property Records Division
 Yellow Medicine County, Minnesota
 I hereby certify that the within instrument was filed on March 28, 2018 at 9:55 AM

Janel Timm, Yellow Medicine County Recorder

By Kelly Kauger Deputy

Statement of Evidence

In 1864, Chas E. Davis and J.W. Webb, Jr. did the original subdivision of the township.

In 1914, John Norgaard, County Survey, surveyed the Section 16-113-39.

In 1928, John Norgaard, County Survey, surveyed the Southwest Quarter of Section 16-113-39.

On March 2, 2017, Bueltel-Moseng Land Surveying found a field stone with 2 steel fence post by it. It is line with the field lines to the west and north and the pine trees to the east.