

CERTIFICATE OF LOCATION OF GOVERNMENT CORNER

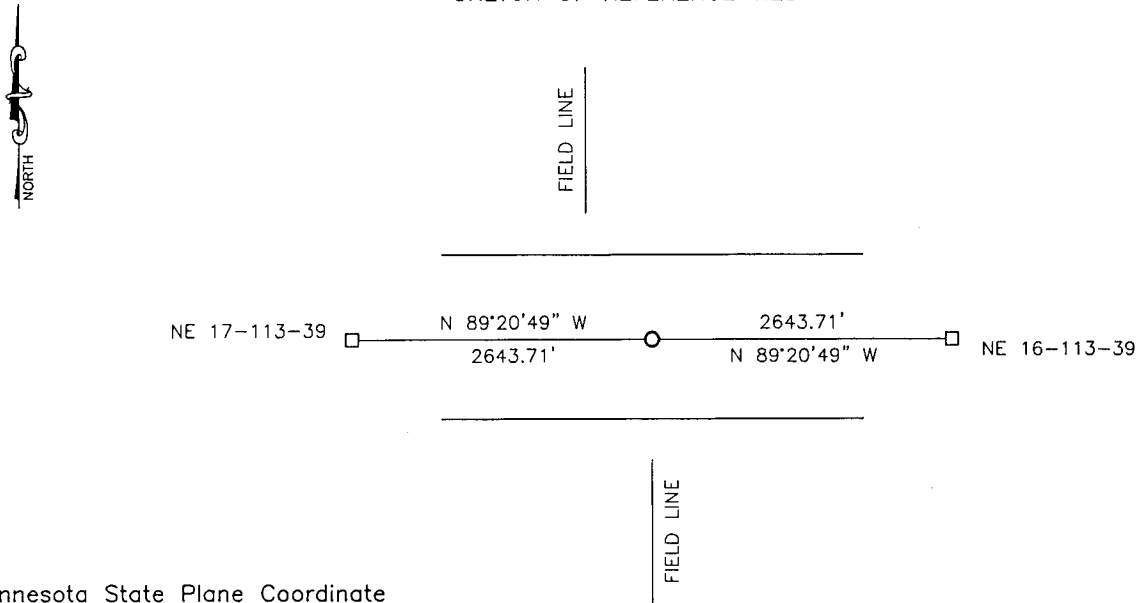
NORTH QUARTER Corner of Section 16, Township 113, Range 39, 5TH P.M.

STATE OF MINNESOTA, County of YELLOW MEDICINE

At the corner location shown on the sketch:

- On _____ found a _____
DATE
- left monument as found, lowered monument, removed monument (explain)
- On 03-08-2017 placed a 5/8" IRON WITH SEAL #50343.
DATE


SKETCH OF REFERENCE TIES



Minnesota State Plane Coordinate
 System Yellow Medicine County Datum
 NAD83 (1996)
 N: 121633.353
 E: 590068.078

Statement of evidence relative to this corner location is on back of page.

I hereby certify that this document and the data contained herein was prepared by me or under my direct supervision.

 3/2/18
 SIGNATURE DATE

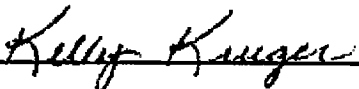
Registration No. 50343

- Land Surveyor, Professional Engineer
- County Surveyor, County Engineer

Doc# 268092 Fee: \$0.00 2 Pages

Property & Public Services
 Property Records Division
 Yellow Medicine County, Minnesota
 I hereby certify that the within instrument
 was filed on March 28, 2018 at 10:05 AM

Janel Timm, Yellow Medicine County Recorder

By  Deputy

Statement of Evidence

In 1864, Chas E. Davis and J.W. Webb, Jr. did the original subdivision of the township.

In 1914, John Norgaard, County Surveyor, located the corner at equal distance between the section corners. He set an iron bolt. He stated that it was not on line, but he did not say in which direction.

On March 8, 2017, Bueltel-Moseng Land Surveying set a 5/8" iron with seal #50343 equal distance and on line between the section corners. In 1914, John Norgaard stated that the corner was not on line. However we were not able to find the bolt he set and the center line of the road is on line with the section corners.