

CERTIFICATE OF LOCATION OF GOVERNMENT CORNER

WEST QUARTER Corner of Section 19, Township 113, Range 39, 5TH P.M.

STATE OF MINNESOTA, County of YELLOW MEDICINE

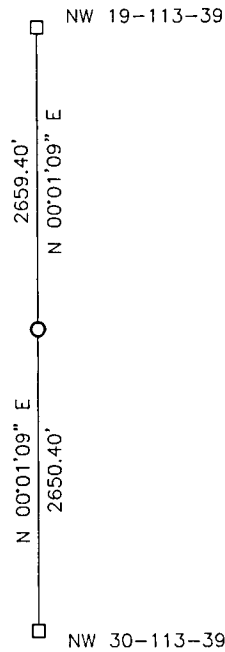
At the corner location shown on the sketch:

On _____ found a _____
DATE

left monument as found, lowered monument, removed monument (explain)

On 11-07-2017 placed a 5/8" IRON WITH SEAL #50343.
DATE

SKETCH OF REFERENCE TIES



Minnesota State Plane Coordinate
System Yellow Medicine County Datum
NAD83 (1996)

N: 113750.522
E: 577103.880

Statement of evidence relative to this corner location is on back of page.

I hereby certify that this document and the data contained herein was prepared by me or under my direct supervision.

[Signature] 3/16/2018
SIGNATURE DATE

Registration No. 50343

- Land Surveyor, Professional Engineer
- County Surveyor, County Engineer

Doc# 268093 Fee: \$0.00 2 Pages

Property & Public Services
Property Records Division
Yellow Medicine County, Minnesota
I hereby certify that the within instrument was filed on March 28, 2018 at 10:10 AM

Janel Timm, Yellow Medicine County Recorder

By Kelly Kueger Deputy

Statement of Evidence

In 1858, W.J. Neeley did the original survey of the west line of the township.

In September 1896, the Lyon County Surveyor found 2 wood stakes set in mound at the corner. He set a kasota stone at the corner.

On November 7, 2017, Bueltel-Moseng Land Surveying searched for the stone in the middle of a plowed field. We were unable to find it. We set a 5/8" iron with seal #50343 on line and proportionate distances from the section corners.