

# CERTIFICATE OF LOCATION OF GOVERNMENT CORNER

NORTHEAST Corner of Section 20, Township 113, Range 39, 5TH P.M.

STATE OF MINNESOTA, County of YELLOW MEDICINE

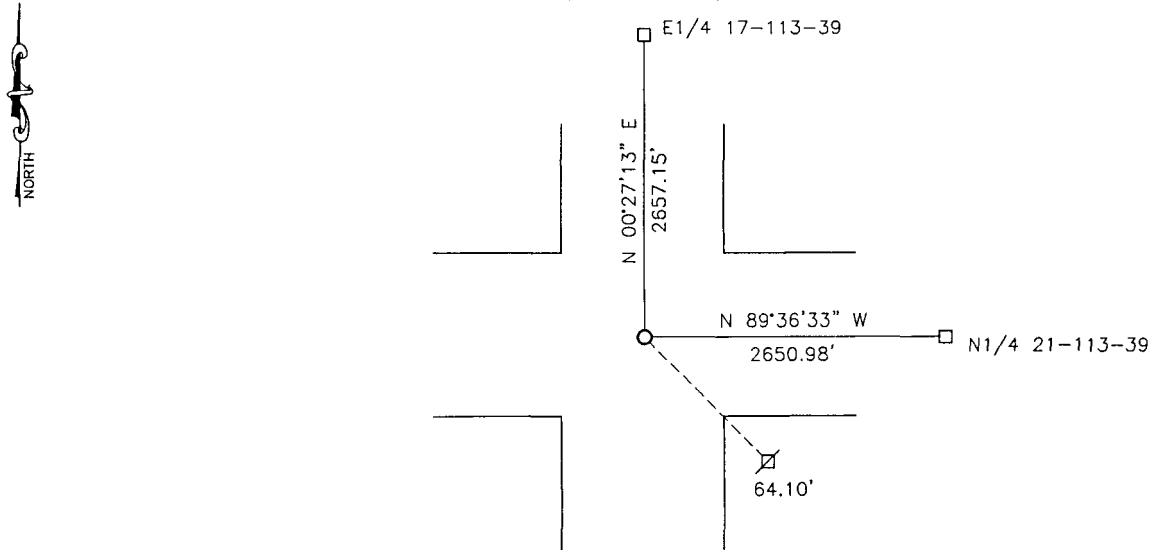
At the corner location shown on the sketch:

On 03-02-2017 found a BRIDGE SPIKE OVER STONE.  
DATE

left monument as found,  lowered monument,  removed monument (explain)

On 03-02-2017 placed a 5/8" IRON WITH SEAL #50343.  
DATE

### SKETCH OF REFERENCE TIES



Minnesota State Plane Coordinate  
System Yellow Medicine County Datum  
NAD83 (1996)

Nail and bottle cap in utility pole SE 64.10'

N: 116349.237  
E: 587382.591

Statement of evidence relative to this corner location is on back of page.

I hereby certify that this document and the data contained herein was prepared by me or under my direct supervision.

[Signature] 3/2/18  
SIGNATURE DATE

Registration No. 50343

- Land Surveyor,  Professional Engineer
- County Surveyor,  County Engineer

**Doc# 268094 Fee: \$0.00 2 Pages**

Property & Public Services  
Property Records Division  
Yellow Medicine County, Minnesota  
I hereby certify that the within instrument  
was filed on March 28, 2018 at 10:15 AM

Janel Timm, Yellow Medicine County Recorder

By Kelly Kauger Deputy

## Statement of Evidence

In 1864, Chas E. Davis and J.W. Webb, Jr. did the original subdivision of the township.

In 1912, John Norgaard, County Surveyor, set a jasper stone monument at the corner.

In 1939, Yellow Medicine County Highway Department located a stone at the corner.

In 1958, Yellow Medicine County Highway Department located a stone at the corner.

On March 2, 2017, Bueltel-Moseng Land Surveying found a county bridge spike at the corner over stone. We removed the spike and set a 5/8" iron with seal #50343 in its place over the stone.