

# CERTIFICATE OF LOCATION OF GOVERNMENT CORNER

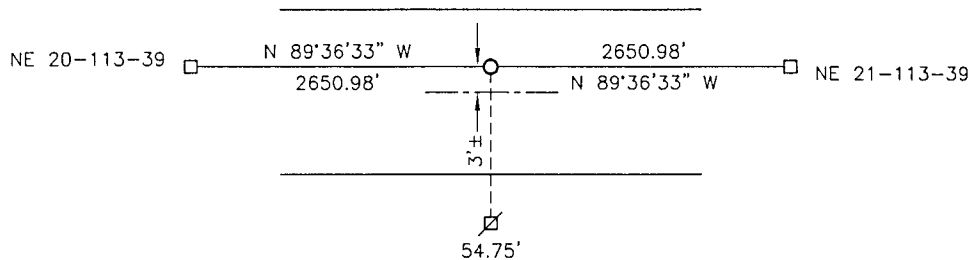
NORTH QUARTER Corner of Section 21, Township 113, Range 39, 5TH P.M.

STATE OF MINNESOTA, County of YELLOW MEDICINE

At the corner location shown on the sketch:

- On \_\_\_\_\_ found a \_\_\_\_\_  
DATE
- left monument as found,  lowered monument,  removed monument (explain)
- On 03-02-2017 placed a 5/8" IRON WITH SEAL #50343.  
DATE

### SKETCH OF REFERENCE TIES



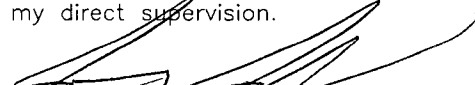
Minnesota State Plane Coordinate  
 System Yellow Medicine County Datum  
 NAD83 (1996)

Nail and bottle cap in utility pole South 54.75'

N: 116331.151  
 E: 590033.505

Statement of evidence relative to this corner location is on back of page.

I hereby certify that this document and the data contained herein was prepared by me or under my direct supervision.

  
SIGNATURE 3/2/18  
DATE

Registration No. 50343

- Land Surveyor,  Professional Engineer  
 County Surveyor,  County Engineer

**Doc# 268095 Fee: \$0.00 2 Pages**

Property & Public Services  
 Property Records Division  
 Yellow Medicine County, Minnesota  
 I hereby certify that the within instrument was filed on March 28, 2018 at 10:20 AM

Janel Timm, Yellow Medicine County Recorder

By Kelly Kauger Deputy

## Statement of Evidence

In 1864, Chas E. Davis and J.W. Webb, Jr. did the original subdivision of the township.

In 1914, John Norgaard, County Surveyor, established the corner at equal distance between the section corners.

On March 2, 2017, Bueltel-Moseng Land Surveying set a 5/8" iron with seal #50343 midway and on line between the section corners.