

# CERTIFICATE OF LOCATION OF GOVERNMENT CORNER

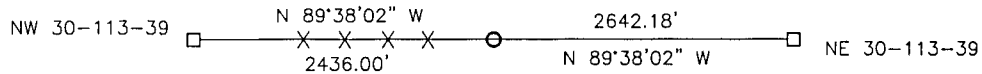
NORTH QUARTER Corner of Section 30, Township 113, Range 39, 5TH P.M.

STATE OF MINNESOTA, County of YELLOW MEDICINE

At the corner location shown on the sketch:

- On \_\_\_\_\_ found a \_\_\_\_\_  
DATE
- left monument as found,  lowered monument,  removed monument (explain)
- On 11-07-2017 placed a NOTHING SET - CORNER IS IN ROCK PILE.  
DATE

### SKETCH OF REFERENCE TIES



Minnesota State Plane Coordinate  
System Yellow Medicine County Datum  
NAD83 (1996)

N: 111084.558  
E: 579540.714

Statement of evidence relative to this corner location is on back of page.

I hereby certify that this document and the data contained herein was prepared by me or under my direct supervision.

[Signature] SIGNATURE 3/16/2018 DATE

Registration No. 50343

- Land Surveyor,  Professional Engineer
- County Surveyor,  County Engineer

**Doc# 268096 Fee: \$0.00 2 Pages**

Property & Public Services  
Property Records Division  
Yellow Medicine County, Minnesota  
I hereby certify that the within instrument was filed on March 28, 2018 at 10:25 AM

Janel Timm, Yellow Medicine County Recorder

By Kelly Kauger Deputy

## Statement of Evidence

In 1864, Chas E. Davis and J.W. Webb, Jr. did the original subdivision of the township.

In March, 1912, John Norgaard, County Surveyor, used a corner fence post as the section corner.

On November 7, 2017, Bueltel-Moseng Land Surveying established the position of the corner on line between the section corners and using proportionate distances from the 1912 survey. Position fit the existing conditions. It is in the center of a rock pile. Nothing set.