

# CERTIFICATE OF LOCATION OF GOVERNMENT CORNER

NORTHEAST Corner of Section 30, Township 113, Range 39, 5TH P.M.

STATE OF MINNESOTA, County of YELLOW MEDICINE

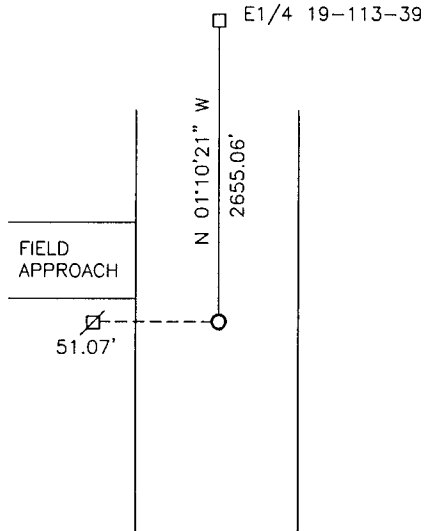
At the corner location shown on the sketch:

On 11-03-2017 found a 6"X6"X18" GRANITE STONE.  
DATE

left monument as found,  lowered monument,  removed monument (explain)

On 11-03-2017 placed a 5/8" IRON WITH SEAL #50343 OVER STONE.  
DATE

### SKETCH OF REFERENCE TIES



Minnesota State Plane Coordinate  
System Yellow Medicine County Datum  
NAD83 (1996)

Nail and bottle cap in utility pole West 51.07'

N: 111067.677  
E: 582182.844

Statement of evidence relative to this corner location is on back of page.

I hereby certify that this document and the data contained herein was prepared by me or under my direct supervision.

[Signature] 3/14/2018  
SIGNATURE DATE

Registration No. 50343

- Land Surveyor,  Professional Engineer
- County Surveyor,  County Engineer

**Doc# 268097 Fee: \$0.00 2 Pages**

Property & Public Services  
Property Records Division  
Yellow Medicine County, Minnesota  
I hereby certify that the within instrument was filed on March 28, 2018 at 10:30 AM

Janel Timm, Yellow Medicine County Recorder

By Kelly Kauger Deputy

## Statement of Evidence

In 1864, Chas E. Davis and J.W. Webb, Jr. did the original subdivision of the township.

In March, 1912, John Norgaard, County Surveyor, stated that he found the stone monument set by himself 12 or 13 years ago.

On November 3, 2017, Bueltel-Moseng Land Surveying dug with a backhoe and found a 6"x6"x18" granite stone monument. We set a 5/8" iron with seal #50343 over the stone.