

# CERTIFICATE OF LOCATION OF GOVERNMENT CORNER

EAST QUARTER Corner of Section 8, Township 114, Range 41, 5TH P.M.

STATE OF MINNESOTA, County of YELLOW MEDICINE

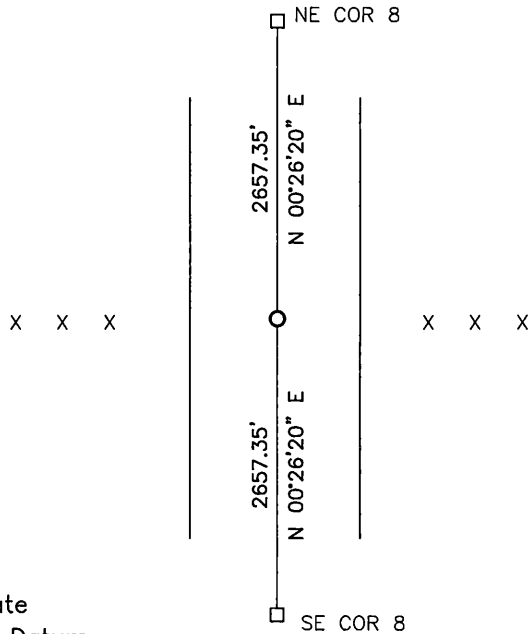
At the corner location shown on the sketch:

On \_\_\_\_\_ found a \_\_\_\_\_  
DATE

left monument as found,  lowered monument,  removed monument (explain)

On 2/22/17 placed a survey spike with seal #50343  
DATE

SKETCH OF REFERENCE TIES




Minnesota State Plane Coordinate System Yellow Medicine County Datum NAD83 (1996)

N: 156397.100  
E: 523830.080

Statement of evidence relative to this corner location is on back of page.

I hereby certify that this document and the data contained herein was prepared by me or under my direct supervision.

  
SIGNATURE

1/25/18  
DATE

Registration No. 50343

- Land Surveyor,  Professional Engineer
- County Surveyor,  County Engineer

**Doc# 268099 Fee: \$0.00 2 Pages**

Property & Public Services  
Property Records Division  
Yellow Medicine County, Minnesota  
I hereby certify that the within instrument was filed on March 28, 2018 at 10:40 AM

Janel Timm, Yellow Medicine County Recorder

By Kelly Kruger Deputy

## Statement of Evidence

In 1867, David Watson did the original subdivision of the township.

On February 22, 2017, Bueltel-Moseng Land Surveying set a survey spike with seal #50343 midway and on line between the section corners. It is in the center of the highway and in line with the fences to the east and west as shown on the MnDOT Plans.