

# CERTIFICATE OF LOCATION OF GOVERNMENT CORNER

NORTHEAST Corner of Section 9, Township 114, Range 41, 5TH P.M.

STATE OF MINNESOTA, County of YELLOW MEDICINE

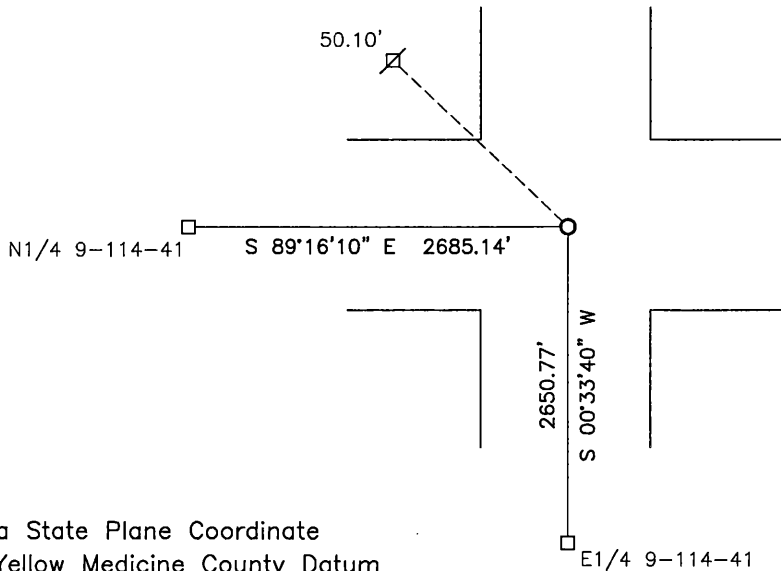
At the corner location shown on the sketch:

On 1/20/16 found a 1" pipe

left monument as found,  lowered monument,  removed monument (explain)

On \_\_\_\_\_ placed a \_\_\_\_\_

### SKETCH OF REFERENCE TIES



Minnesota State Plane Coordinate  
System Yellow Medicine County Datum  
NAD83 (1996)

N: 158986.238  
E: 529191.463

Nail and bottle cap in utility pole NW 50.10'

Statement of evidence relative to this corner location is on back of page.

I hereby certify that this document and the data contained herein was prepared by me or under my direct supervision.

[Signature] 1/25/18  
SIGNATURE DATE

Registration No. 50343

- Land Surveyor,  Professional Engineer  
 County Surveyor,  County Engineer

**Doc# 268100 Fee: \$0.00 2 Pages**

Property & Public Services  
Property Records Division  
Yellow Medicine County, Minnesota  
I hereby certify that the within instrument was filed on March 28, 2018 at 10:45 AM

Janel Timm, Yellow Medicine County Recorder

By Kelly Kueger Deputy

## Statement of Evidence

In 1867, David Watson did the original subdivision of the township.

On May 16, 1891, Jonah Peterman, County Surveyor, found the corner and set a stone.

On November 18, 1900, John Norgaard, County Surveyor, found a stone at the corner and set a 1" pipe over the stone.

(No date), the Yellow Medicine County Highway Department found a pin at the corner.

(No date), Marihart Land Surveying found a monument at the corner.

On January 20, 2016, Bueltel-Moseng Land Surveying found a 1" pipe at the corner.