

# CERTIFICATE OF LOCATION OF GOVERNMENT CORNER

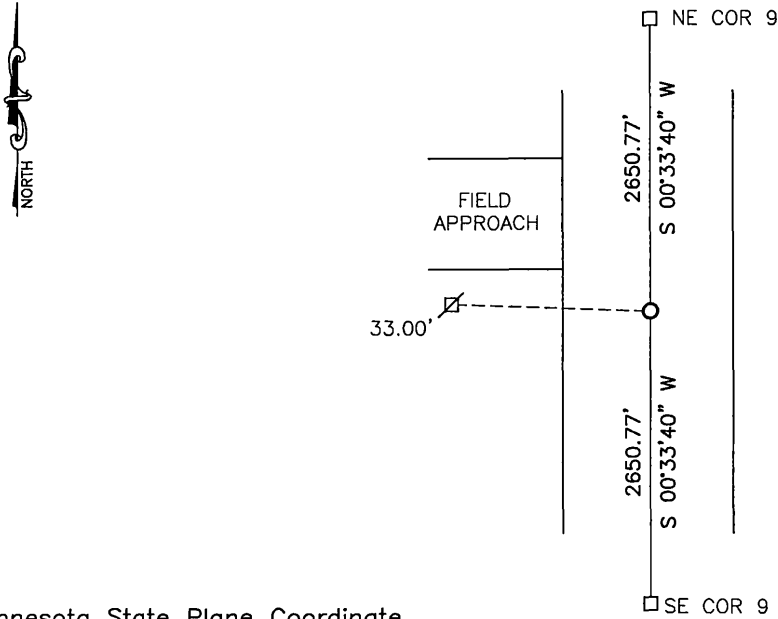
EAST QUARTER Corner of Section 9, Township 114, Range 41, 5TH P.M.

STATE OF MINNESOTA, County of YELLOW MEDICINE

At the corner location shown on the sketch:

- On \_\_\_\_\_ found a \_\_\_\_\_  
DATE
- left monument as found,  lowered monument,  removed monument (explain)
- On 2/22/17 placed a 5/8" iron with seal #50343  
DATE

SKETCH OF REFERENCE TIES



Minnesota State Plane Coordinate System Yellow Medicine County Datum NAD83 (1996)

N: 156335.595  
E: 529165.499

Nail and bottle cap in utility pole West 33.00'

Statement of evidence relative to this corner location is on back of page.

I hereby certify that this document and the data contained herein was prepared by me or under my direct supervision.

[Signature] SIGNATURE 1/25/18 DATE

Registration No. 50343

- Land Surveyor,  Professional Engineer
- County Surveyor,  County Engineer

**Doc# 268101 Fee: \$0.00 2 Pages**

Property & Public Services  
Property Records Division  
Yellow Medicine County, Minnesota  
I hereby certify that the within instrument was filed on March 28, 2018 at 10:50 AM

Janel Timm, Yellow Medicine County Recorder

By Kelly Kuger Deputy

## Statement of Evidence

In 1867, David Watson did the original subdivision of the township.

On May 16, 1891, Jonah Peterman, County Surveyor, established the corner.

On February 22, 2017, Bueltel-Moseng Land Surveying set a 5/8" iron with seal #50343 midway and on line between the section corners.