

# CERTIFICATE OF LOCATION OF GOVERNMENT CORNER

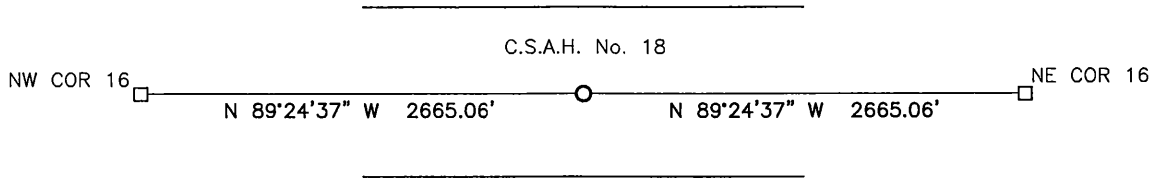
NORTH QUARTER Corner of Section 16, Township 114, Range 41, 5TH P.M.

STATE OF MINNESOTA, County of YELLOW MEDICINE

At the corner location shown on the sketch:

- On \_\_\_\_\_ found a \_\_\_\_\_  
DATE
- left monument as found,  lowered monument,  removed monument (explain)
- On 2/22/17 placed a survey spike with seal #50343  
DATE

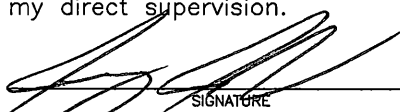
### SKETCH OF REFERENCE TIES



Minnesota State Plane Coordinate  
 System Yellow Medicine County Datum  
 NAD83 (1996)  
 N: 153712.379  
 E: 526474.620

Statement of evidence relative to this corner location is on back of page.

I hereby certify that this document and the data contained herein was prepared by me or under my direct supervision.

  
 \_\_\_\_\_  
 SIGNATURE

1/25/18  
 \_\_\_\_\_  
 DATE

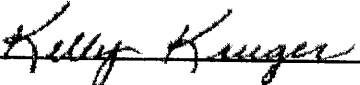
Registration No. 50343

- Land Surveyor,  Professional Engineer
- County Surveyor,  County Engineer

**Doc# 268103 Fee: \$0.00 2 Pages**

Property & Public Services  
 Property Records Division  
 Yellow Medicine County, Minnesota  
 I hereby certify that the within instrument  
 was filed on March 28, 2018 at 11:00 AM

Janel Timm, Yellow Medicine County Recorder

By  Deputy

## Statement of Evidence

In 1867, David Watson did the original subdivision of the township.

On October 11, 1901, John Norgaard, County Surveyor, set a monument midway and on line between the section corners.

On February 22, 2017, Bueltel-Moseng Land Surveying set a survey spike with seal #50343 midway and on line between the section corners.