

CERTIFICATE OF LOCATION OF GOVERNMENT CORNER

NORTHEAST Corner of Section 17, Township 114, Range 41, 5TH P.M.

STATE OF MINNESOTA, County of YELLOW MEDICINE

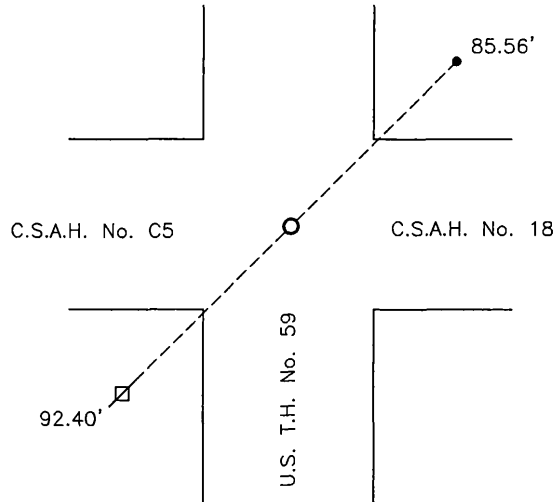
At the corner location shown on the sketch:

On _____ found a _____
DATE

left monument as found, lowered monument, removed monument (explain)

On 2/22/17 placed a survey spike with seal #50343
DATE

SKETCH OF REFERENCE TIES




Minnesota State Plane Coordinate
System Yellow Medicine County Datum
NAD83 (1996)

N: 153739.830
E: 523809.730

Nail and bottle cap in utility pole SW 92.40'
MnDOT geodetic monument "8703P" NE 85.56'

Statement of evidence relative to this corner location is on back of page.

I hereby certify that this document and the data contained herein was prepared by me or under my direct supervision.

 SIGNATURE
DATE 4/25/18

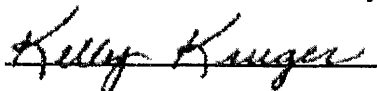
Registration No. 50343

- Land Surveyor, Professional Engineer
- County Surveyor, County Engineer

Doc# 268104 Fee: \$0.00 2 Pages

Property & Public Services
Property Records Division
Yellow Medicine County, Minnesota
I hereby certify that the within instrument
was filed on March 28, 2018 at 11:05 AM

Janel Timm, Yellow Medicine County Recorder

By  Deputy

Statement of Evidence

In 1867, David Watson did the original subdivision of the township.

(No date), MnDOT recorded GPS coordinates on teh monument.

On February 22, 2017, Bueltel-Moseng Land Surveying set a survey spike with seal #50343 by using coordinates from MnDOT. The corner falls in the center of the intersection as shown on the MnDOT Plans.