

CERTIFICATE OF LOCATION OF GOVERNMENT CORNER

NORTH QUARTER Corner of Section 13, Township 115, Range 42, 5TH P.M.

STATE OF MINNESOTA, County of YELLOW MEDICINE

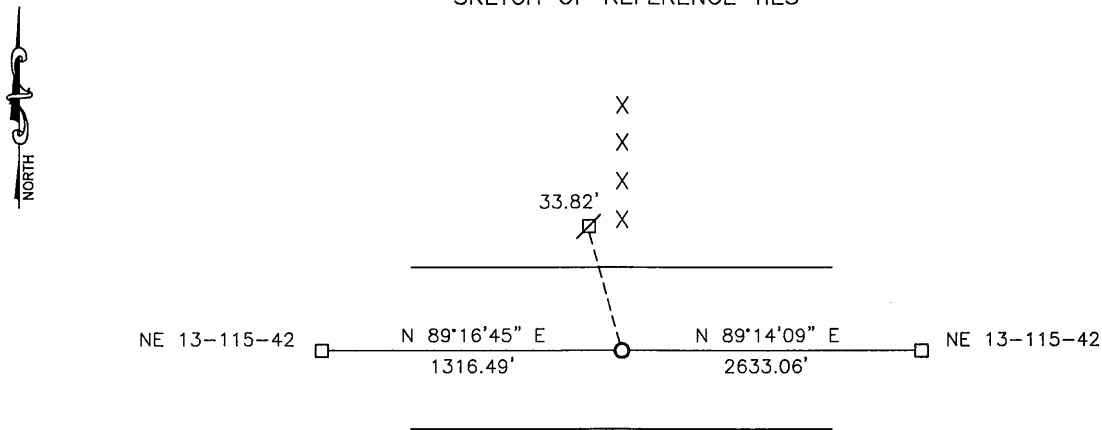
At the corner location shown on the sketch:

On 04-06-2017 found a FIELD STONE
DATE

left monument as found, lowered monument, removed monument (explain)

On 04-06-2017 placed a 5/8" IRON WITH SEAL #43844 OVER STONE
DATE

SKETCH OF REFERENCE TIES



Minnesota State Plane Coordinate
 System Yellow Medicine County Datum
 NAD83 (1996)

N: 185515.683
 E: 510689.968

Nail and bottle cap in utility pole NW 33.82'

Statement of evidence relative to this corner location is on back of page.

I hereby certify that this document and the data contained herein was prepared by me or under my direct supervision.

[Signature] 2/26/18
SIGNATURE DATE

Registration No. 43844

Land Surveyor, Professional Engineer
 County Surveyor, County Engineer

Doc# 268106 Fee: \$0.00 2 Pages

Property & Public Services
 Property Records Division
 Yellow Medicine County, Minnesota
 I hereby certify that the within instrument was filed on March 28, 2018 at 11:15 AM

Janel Timm, Yellow Medicine County Recorder

By *[Signature]* Deputy

Statement of Evidence

In 1864, C.E. Davis and J.W. Webb, Jr. did the original subdivision of the township.

In 1913, John Norgaard, County Surveyor set a stone at the corner.

On April 6, 2017, Bueltel-Moseng Land Surveying dug with a backhoe and found a field stone. We set a 5/8" iron with seal #43844 on the east side of the stone. We also set a 5/8" iron with seal #43844 over it.