

CERTIFICATE OF LOCATION OF GOVERNMENT CORNER

EAST QUARTER Corner of Section 13, Township 115, Range 42, 5TH P.M.

STATE OF MINNESOTA, County of YELLOW MEDICINE

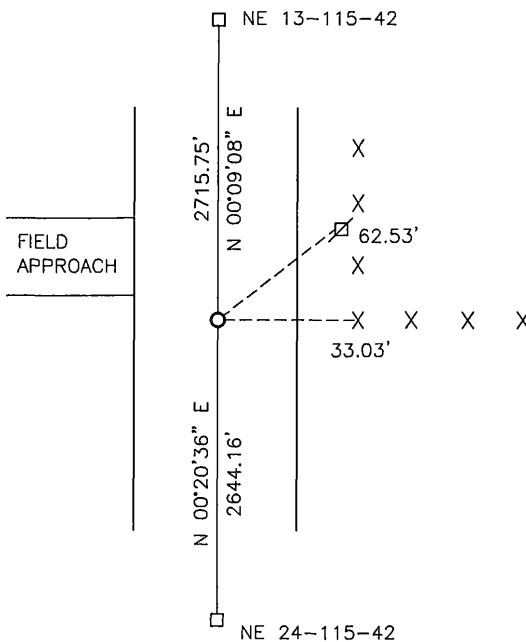
At the corner location shown on the sketch:

On 04-06-2017 found a FIELD STONE
DATE

left monument as found, lowered monument, removed monument (explain)

On 04-06-2017 placed a 5/8" IRON WITH SEAL #43844 OVER STONE
DATE

SKETCH OF REFERENCE TIES




Minnesota State Plane Coordinate
System Yellow Medicine County Datum
NAD83 (1996)

N: 182835.054
E: 513315.570

Nail and survey marker in utility pole NE 62.53'
Nail and survey marker in corner fence post East 33.03'

Statement of evidence relative to this corner location is on back of page.

I hereby certify that this document and the data contained herein was prepared by me or under my direct supervision.


SIGNATURE 2/26/18
DATE


Registration No. 43844

Land Surveyor, Professional Engineer
 County Surveyor, County Engineer

Doc# 268107 Fee: \$0.00 2 Pages

Property & Public Services
Property Records Division
Yellow Medicine County, Minnesota
I hereby certify that the within instrument
was filed on March 28, 2018 at 11:20 AM

Janel Timm, Yellow Medicine County Recorder

By  Deputy

Statement of Evidence

In 1858, W.J. Neely did the original survey of the east line of the township.

In 1930, John Norgaard, County Surveyor, set a stone at the corner.

On April 6, 2017, Bueltel-Moseng Land Surveying dug with a backhoe and found a field stone. We set a 5/8" iron with seal #43844 on the north side of the stone. We also set a 5/8" iron with seal #43844 over it.