

CERTIFICATE OF LOCATION OF GOVERNMENT CORNER

NORTHEAST Corner of Section 13, Township 115, Range 42, 5TH P.M.

STATE OF MINNESOTA, County of YELLOW MEDICINE

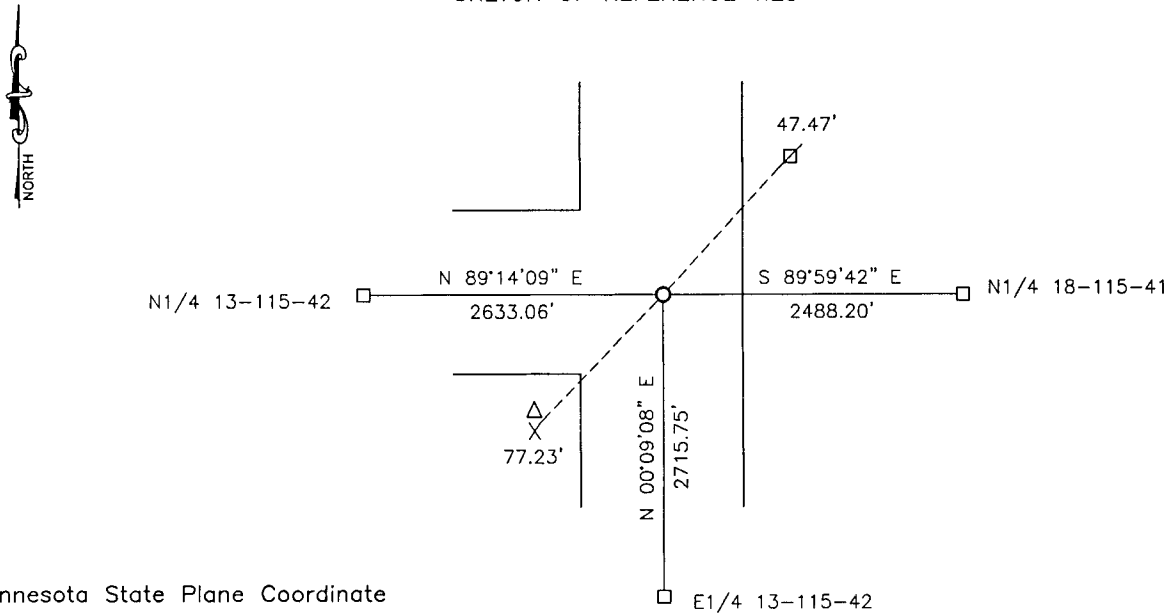
At the corner location shown on the sketch:

On _____ found a _____
DATE

left monument as found, lowered monument, removed monument (explain)

On 04-06-2017 placed a 5/8" IRON WITH SEAL #43844.
DATE

SKETCH OF REFERENCE TIES



Minnesota State Plane Coordinate
System Yellow Medicine County Datum
NAD83 (1996)

N: 185550.798
E: 513322.791

Nail and seal in utility pole NE 47.47'
Nail and seal in pedestal guard post SW 77.23'

Statement of evidence relative to this corner location is on back of page.

I hereby certify that this document and the data contained herein was prepared by me or under my direct supervision.

[Signature] 2/26/18
SIGNATURE DATE

Registration No. 43844

Land Surveyor, Professional Engineer
 County Surveyor, County Engineer

Doc# 268108 Fee: \$0.00 2 Pages

Property & Public Services
Property Records Division
Yellow Medicine County, Minnesota
I hereby certify that the within instrument was filed on March 28, 2018 at 12:05 PM

Janel Timm, Yellow Medicine County Recorder

By [Signature] Deputy

Statement of Evidence

In 1858, W.J. Neely did the original survey of the east line of the township.

In 1913, John Norgaard, County Surveyor, set a stone at the corner.

On April 29, 1988, Moseng Land Surveying dug with a backhoe and found a granite stone at the corner. They set a 5/8" iron with seal #11943 over the stone.

On April 6, 2017, Bueltel-Moseng Land Surveying searched for the iron set by Moseng Land Surveying but did not find it. We used the ties set by Moseng Land Surveying to set a 5/8" iron with seal #43844 in its place.