

CERTIFICATE OF LOCATION OF GOVERNMENT CORNER

NE COR NW1/4, NW1/4 of Section 13, Township 115, Range 42, 5TH P.M.

STATE OF MINNESOTA, County of YELLOW MEDICINE

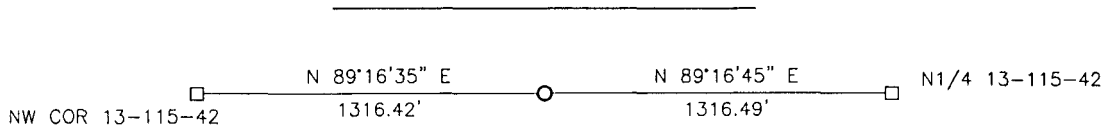
At the corner location shown on the sketch:

On 04-06-2017 found a FIELD STONE
DATE

left monument as found, lowered monument, removed monument (explain)

On 04-06-2017 placed a 5/8" IRON WITH SEAL #43844 OVER STONE
DATE

SKETCH OF REFERENCE TIES



X
X
X
X

Minnesota State Plane Coordinate
 System Yellow Medicine County Datum
 NAD83 (1996)

N: 185499.119
 E: 509373.578

Statement of evidence relative to this corner location is on back of page.

I hereby certify that this document and the data contained herein was prepared by me or under my direct supervision.

[Signature] 2/26/18
SIGNATURE DATE

Registration No. 43844

Land Surveyor, Professional Engineer
 County Surveyor, County Engineer

Doc# 268109 Fee: \$0.00 2 Pages

Property & Public Services
 Property Records Division
 Yellow Medicine County, Minnesota
 I hereby certify that the within instrument was filed on March 28, 2018 at 12:10 PM

Janel Timm, Yellow Medicine County Recorder

By [Signature] Deputy

Statement of Evidence

In 1864, C.E. Davis and J.W. Webb, Jr. did the original subdivision of the township.

In 1913, John Norgaard, County Surveyor, set a stone at the corner.

On April 6, 2017, Bueltel-Moseng Land Surveying dug with a backhoe and found a field stone. We set a 5/8" iron with seal #43844 on the north side of the stone. We also set a 5/8" iron with seal #43844 over it.